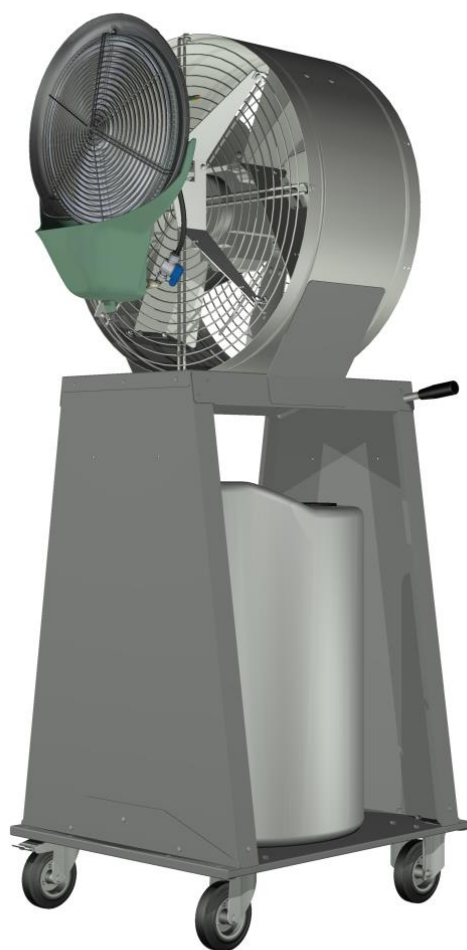


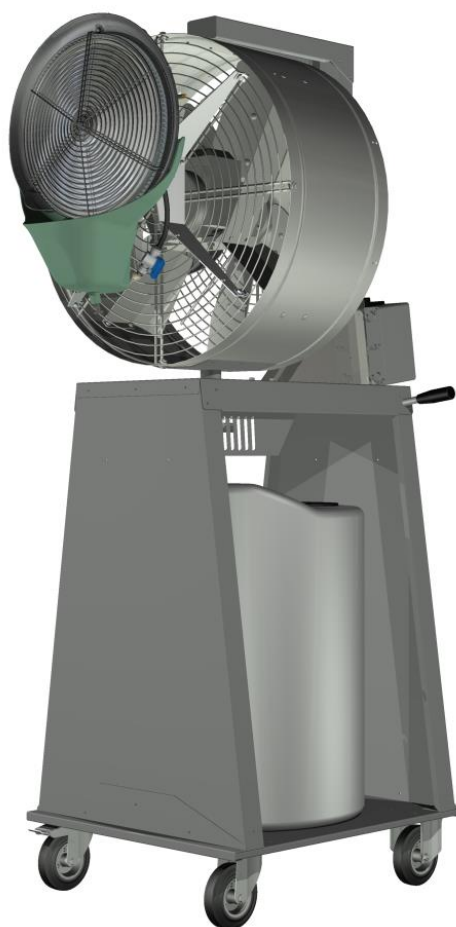
PowerMister

PowerMister Rotating

Operator's Manual



Art. No. 0811000



Art. No. 0811001

CE



Read this manual carefully before
installing and operating the machine

INDEX

INDEX	2
1 - INTRODUCTION	3
1.1 General safety	3
1.2 Guidelines for the correct disposal of the product (UE Countries)	4
1.3 Conventions used in this manual.....	4
1.4 Keeping and updating the instruction manual.....	4
1.5 Target readers	4
1.6 Pictograms.....	5
1.7 Applications	7
1.8 Versions.....	7
1.9 Machine identification and number plate data	7
1.10 Description of equipment	8
1.11 Transport and handling.....	9
1.12 Warranty	9
1.13 Manufacturer's identification data	9
1.14 Declarations.....	9
1.15 EC Declaration of Conformity	10
2 - INSTALLATION.....	11
2.1 Preliminary operations	11
2.2 Positioning	11
2.3 Electrical connections	12
2.4 Water/chemicals supply	12
3 - OPERATION.....	12
3.1 Preliminary operations	12
3.2 First start-up checks	12
3.3 Start-up and operation	13
3.4 Adjustment of the water/solution flow rate	14
3.5 Stop	14
4 - MAINTENANCE	15
4.1 Cleaning the disc	15
4.2 Cleaning the tank.....	15
4.3 Replacing and cleaning the pump	15
4.4 Replacing the rotating disc	16
4.6 Replacing the nozzle	17
4.7 Accessories	17
5 - TECHNICAL SPECIFICATIONS	18
5.1 Technical data	18
5.3 Wiring diagrams.....	20
6. SPARE PARTS LIST	21
7. TROUBLESHOOTING GUIDE	27

1 - INTRODUCTION

1.1 General safety

Intended use

This appliance must only be used for the functions for which it was designed:

- Humidification
- Cooling
- Nebulization of chemical solutions

Any other use is to be considered improper and dangerous. The manufacturer cannot be held responsible for any damage resulting from improper, incorrect and unreasonable use and/or if the appliance is used in non-compliant installations.

General safety warnings

- Check the integrity of the appliance when you open the packaging. Check for damages or deformations to the plastic parts which may lead to breakage and/or malfunction during use. Do not install and use a damaged unit. Carry out a general inspection of the machine.
- Before connecting and operating the appliance, make sure that the data on the rating plate are compatible with those of your electrical system. See data label on the appliance side.
- Comply with the general safety rules applicable to electrical equipment, and in particular:
 - Carefully follow all the instructions provided with the product.
 - Do not place any objects on the unit.
 - Prevent children and/or incapacitated persons from using the device without proper supervision.
 - Do not touch the unit during operation or while the disc is stopping.
 - Never immerse the appliance in water or any other liquid.
 - Do not place any objects inside the tank as this could cause irreparable damage to the appliance.
 - Do not use accessories, spare parts or components not intended for or supplied by the manufacturer.
 - Avoid touching the appliance with wet or damp hands.
 - Do not pull power cables or expose them to risk of shearing.
 - Do not leave the appliance exposed to the elements (rain, sun, etc.).
 - In the event of a fault or malfunction, switch the appliance off immediately and disconnect it from mains. Do not attempt to open or tamper with the appliance: contact a qualified technician.
 - Do not attempt to fill or empty the tank when the appliance is in operation.

Special safety warnings for nebulization

- Do not spray flammable chemical products.
- Only use chemical products recommended or approved by the manufacturer. In doubt contact the manufacturer or his authorized dealers.
- Consider the risks related to the nebulization of chemicals. Check the symbols on the container and their meanings. Read the safety data sheets provided by the chemical's manufacturer.
- Do not nebulize substances whose potential effects and dangers are not exactly known.
- According to the instructions of the chemical's manufacturer, take the required precautions for the protection of persons and animals, such as, for example:
 - To keep persons, animals, plants away from the room during the disinfection/cleaning process.
 - Not to spray chemical solutions on human beings, animals or plants.
 - To provide adequate ventilation in the room after each disinfection/cleaning treatment.
 - To wear personal protective equipment such as masks, respirators, gloves, gowns, shoe covers, head covers, goggles as prescribed when entering the treated area.
 - To follow the emergency procedures prescribed by the safety data sheet of the product used in case of contact of chemicals with skin, eyes, etc.

1.2 Guidelines for the correct disposal of the product (UE Countries)

Pursuant to European Directive 2012/19/EU:

At the end of its useful life, the product and its packaging must not be disposed of with urban waste. It can be handed in at the separate waste collection points set up by the municipalities, or at retailers who provide this service. Disposing of the product separately avoids possible negative consequences for the environment and for health and allows the recovery of the materials of which it is composed to obtain a significant saving of energy and resources. To emphasise the obligation to dispose of electrical and electronic equipment separately, the product is marked with a crossed-out wheeled bin.



1.3 Conventions used in this manual

The manual is divided into chapters. The operators to whom the instructions are addressed are specified, where necessary, to operate the machine safely.

The sequence of chapters follows to the temporal sequence of the machine's life.

To facilitate immediate understanding of the text, terms, abbreviations and pictograms are used, the meaning of which is indicated below.

ABBREVIATIONS

Cap. = Chapter

Par. = Paragraph

Pag. = Page

Fig. = Figure

Tab. = Table

UNITS OF MEASUREMENT

The units of measurement used are those of the International System (SI).

1.4 Keeping and updating the instruction manual

The instruction manual must be kept with care and must always accompany the machine during its lifetime. Parts must not be removed, torn or arbitrarily modified.

The manual should be stored in an environment protected from moisture and heat and in the immediate vicinity of the machine to which it relates. The manufacturer can provide additional copies of the machine instruction manual at the request of the user.

You can make a request by writing to the manufacturer.

The manufacturer reserves the right to modify the design and make improvements to the machine without informing the Customer, and without updating the manual already delivered to the user. However, in the event of changes to the machine installed at the Customer's premises, agreed with the manufacturer and which involve the modification of one or more chapters of the instruction manual, it will be the manufacturer's responsibility to send the affected users the chapters affected by the change.

It is the responsibility of the User to replace the old chapters, the start page and the table of contents with the new ones in all copies owned.

1.5 Target readers

This manual is intended for the installer, the operator and qualified personnel authorised to service the machine.

OPERATOR: means the person or persons responsible for installing, operating, adjusting, cleaning, repairing and moving machinery and for carrying out the simplest maintenance operations.

QUALIFIED PERSONNEL/QUALIFIED WORKERS: these are people who have attended specialised courses, training, etc. and have experience in the installation, commissioning and maintenance, repair, transport of the machine.

The appliance is intended for industrial/professional use by trained operators, in particular who:






- have reached the age of majority;
- are physically and mentally fit to perform the assigned task;
- have been properly instructed in the use and maintenance of the machine;
- have been judged by the employer to be suitable for the task;
- are able to understand and interpret the operator's manual and safety instructions;
- are familiar with emergency procedures and their implementation;
- are able to operate the specific type of equipment;
- are familiar with the specific relevant safety rules;
- have understood the operating procedures defined by the manufacturer.

The appliance may be used by persons with reduced physical, sensory or mental capabilities, or lack of experience or knowledge, provided that they are supervised or have received instructions concerning the safe use of the appliance and an understanding of the hazards involved.

1.6 Pictograms

This section explains the meaning of the pictograms indicating the operator's qualification, the state of the machine, the hazards and the obligations/prohibitions to be respected. Their use makes it possible to provide rapid and unambiguous information necessary for the correct and safe use of the machine.

PICTOGRAMS RELATING TO OPERATOR QUALIFICATION

Symbol	Description
	General operator: operator without specific skills, able to carry out only simple tasks on the instructions of qualified technicians.
	Driver of lifting and handling equipment: an operator qualified to use lifting and handling equipment and machines (strictly following the manufacturer's instructions), in accordance with the laws in force in the country of the machine user.
	Mechanical maintenance technician: qualified technician, able to operate the machine under normal conditions and to carry out all checks, maintenance and repairs on mechanical parts.
	Electrical maintenance technician: qualified technician, able to operate the machine under normal conditions and to carry out all electrical checks, maintenance and repairs on electrical parts, control panels and junction boxes.
	Manufacturer's service technician: a qualified technician made trained by the manufacturer to carry out operations of a complex nature in particular situations or, in any case, as agreed with the user. The skills are, depending on the case, mechanical and/or electrical and/or electronic and/or software.

SAFETY PICTOGRAMS (ISO 7010)

Pictograms contained within a triangle indicate DANGER.

Pictograms contained within a circle impose a PROHIBITION/OBLIGATION.

Pictogram

Description



Dangerous electrical voltage



General danger



Do not remove safety devices



Do not clean, oil, grease, repair or adjust moving parts by hand



Obligation to switch off power before starting work or repairs



Obligation to wear protective gloves



Obligation to wear safety shoes



Obligation to wear a helmet

1.7 Applications

The **PowerMister** can be used:

- as a **humidifier** in medium to large agricultural, industrial or commercial premises.
- as an **adiabatic cooler**. This is possible because atomised water in contact with warm ambient air tends to evaporate, removing heat and lowering the temperature. The cooling capacity depends on temperature, humidity and air distribution.
- as a **nebulizer** of disinfecting and cleaning solutions in livestock premises.

The **PowerMister** is equipped with an integral water tank and mounted on a trolley, which allows to move the machine inside the area to be humidified, cooled or disinfected according to the Customer's needs, ensuring maximum versatility of use. Furthermore, on the **PowerMister Rotating** the fan/humidifier assembly can swing slowly 45° left and right during operation for an optimal distribution of the mist.



This machine must only be used for the scope
for which it was designed:

HUMIDIFICATION / ADIABATIC COOLING / NEBULIZATION

All other uses are improper and potentially dangerous.



1.8 Versions

0811000 **PowerMister**, with airflow rate of 8000 m³/h, 230V ~ 50Hz

0811001 **PowerMister Rotating**, with airflow rate of 8000 m³/h, 230V ~ 50Hz

1.9 Machine identification and number plate data

Each machine is identified by a CE nameplate on which the article code, serial number and technical data of the machine are indelibly marked (Fig. 1.9.1).

Always quote these references when contacting the manufacturer or his technical service.

Humidifier/Cooler <i>Umidificatore/Raffrescatore</i>		PowerMister	
Atomization Capacity 40 l/h max <i>Capacità di Atomizzazione</i>			0811000
Airflow 8000 m ³ /h <i>Portata Aria</i>			ART1959050
Power Supply: 230V 50Hz 3,6A [Ⓢ] <i>Alimentazione</i>			SER0006
Construction Year: 2023 <i>Anno di Costruzione</i>		IP55	
Manufactured by FRANCO s.r.l. - Via Nazionale, 80 - 12010 Cervasca CN (Italy)			

Fig.1.9.1 CE nameplate

1.10 Description of equipment

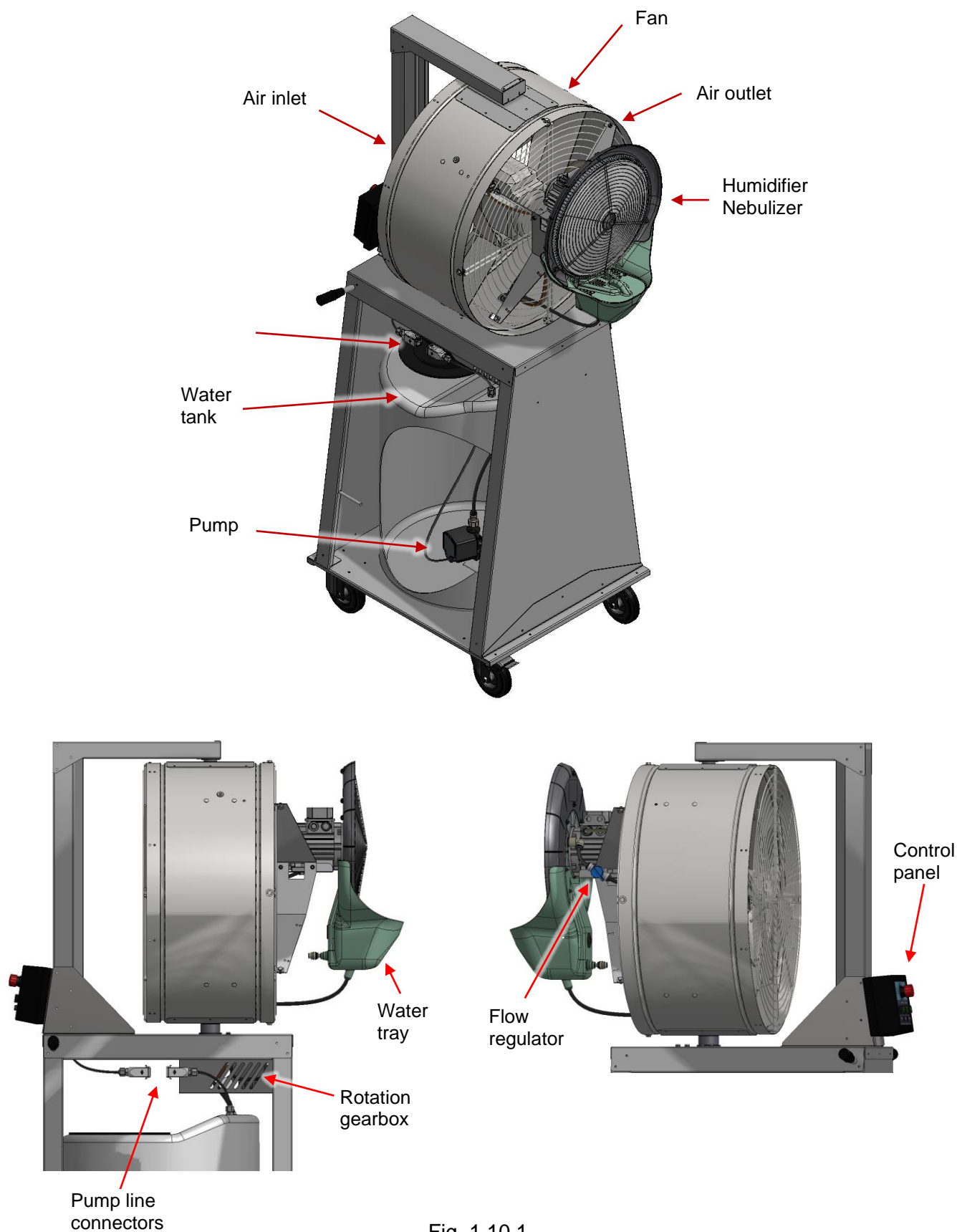


Fig. 1.10.1

1.11 Transport and handling



The unit is packed on a pallet, with protective film and fixing straps.

Unpack the unit carefully to avoid damage to components. Check that there are no visibly damaged parts. If the unit is damaged, do not use it and contact the manufacturer. Do not dispose of the packaging elements in the environment: they must be placed in special collection areas.

The **PowerMister / PowerMister Rotating** are wheeled units that can be moved horizontally on flat surfaces without the aid of lifting and transport equipment.



WARNING! Do not move the appliance while in operation. Always switch off and unplug the appliance before moving it.



To lift the machine, use suitable means (hand pallet truck, forklift truck, etc.). The weight is shown on the nameplate of the unit and on the specification chart at Par. 5.1.

1.12 Warranty

This appliance is guaranteed for 12 months from the date of manufacture for all faults attributable to a proven manufacturing or material defect. The warranty does not cover damage caused by transport, bad or incorrect maintenance, neglect, inability to use, improper use, including use of incorrect chemical products, tampering by unauthorised personnel and any causes beyond the control of the Manufacturer. During the warranty period, the Manufacturer undertakes to supply free of charge those parts that should prove to be defective at the origin.

The intervention must be carried out by an authorised and qualified technician.

1.13 Manufacturer's identification data

Manufacturer

FRANCO s.r.l.

Registered Office

VIA NAZIONALE, 80 - 12010 CERVASCA (CN) - ITALY

Contact

Tel.: (0039) 0171 - 61.16.63

Email: support@francosrl.com

Web: francosrl.com

1.14 Declarations

The machine to which this manual refers is manufactured in accordance with the relevant European Community legislation applicable at the time of its placing on the market.

The machine is not included among those mentioned in Annex IV of Directive 2006/42/EC.

1.15 EC Declaration of Conformity

THE MANUFACTURER

FRANCO s.r.l.

Company

Via Nazionale, 80

Address

12010

Postcode

CN

Province

Cervasca

City

Italy

State

DECLARES under its own responsibility that the machine

Humidifier / Cooler / Nebulizer

Description

PowerMister / PowerMister Rotating

Model(s)

0811000 / 0811001

Article number

PowerMister

Trade name

Room Humidification / Cooling / Nebulization

Intended use

complies with the following European Directives:

2006/42/EC
(2014/35/EU)
2014/30/EU

Machinery Directive
(Low Voltage Directive)
Electromagnetic Compatibility Directive

Harmonised standards and reference specifications used:

EN 12100:2010
EN 60335-1:2012 + A11 + A13 + A1 + A14 + A2 + A15:2021
EN 60335-2-98:2003/A11:2019
EN 60335-2-41:2003/A2:2010
EN 60034-1:2010
EN 55014-1 :2017, EN 55014-2:2015, EN 61000-6-1:2016, EN 61000-6-3:2010

Legal entity authorised to establish the Technical File:

FRANCO s.r.l.

Name

Via Nazionale, 80

Address

12010

Postcode

CN

Province

Cervasca

City

Italy

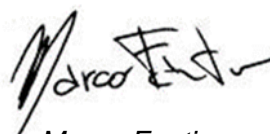
State

Place and date of document

Cervasca, 27/10/2023

Rev. 231027

The manufacturer
Signature



Marco Fantino
Administrator

2 - INSTALLATION

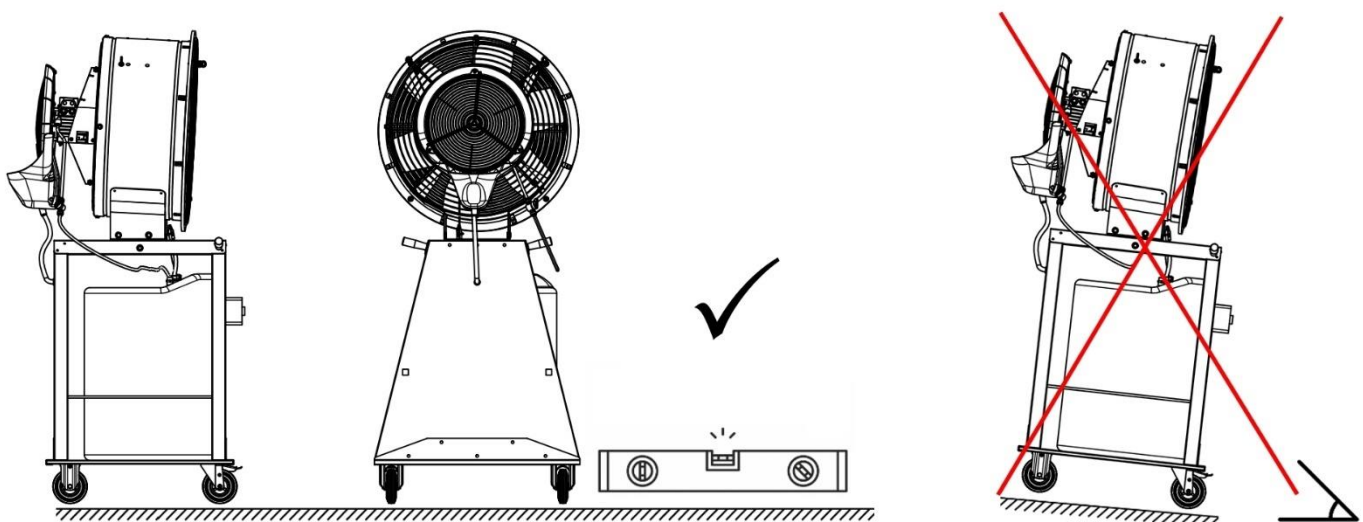
2.1 Preliminary operations

To operate the **PowerMister / PowerMister Rotating**, the following is required:

- Power mains with appropriate voltage and frequency ratings, with earthing and protective devices;
- Room temperature during operation: must be between 1°C and 40°C
- Temperature of the water and liquids used: must not exceed 35°C.
- Potable water with low fixed residue or treated water. The water quality affects the frequency of maintenance operations and the correct operation of the humidifier. For humidification and cooling, the water hardness should not exceed 15-20° fH (CaCO₃ content less than 150-200 mg/l), bearing in mind that the use of very hard water causes limescale deposits to form on internal parts and shortens the life of the evaporative panels. If water hardness exceeds the above limits, consider a pre-treatment of the water.
- For cleaning/disinfection use, suitable chemicals recommended or approved by the manufacturer.

2.2 Positioning

The **PowerMister / PowerMister Rotating** must be placed on a flat and level surface, in a horizontal position. When the machine is in the desired position, lock the rear braked wheel before starting it.



To prevent condensate grow up in humidification and cooling applications, maintain at least 1m between the humidifier and the surrounding walls. The distance from the wall in front of the machine should be evaluated according to the size of the room and the humidification or cooling requirements.

The unit is equipped with metal guards to protect the rotating parts (centrifugal disc, fan).



Do not remove any protective guards. Respect the safety distances from moving parts prescribed by the UNI EN ISO 13857:2008 standard. Any maintenance or repair operations requiring the removal of protections must be carried out exclusively by qualified personnel. Before service or maintenance, stop the machine and disconnect it from the power supply.

2.3 Electrical connections



- Check that the electrical installation to which the appliance is connected complies with the electrical safety regulations in force in the country of destination.
- Check that the supply voltage ratings are consistent with the machine ratings shown on the data label.
- **EARTHING IS MANDATORY.**

The unit is equipped with a power cable with Schuko plug to be connected to an EARTHED 230V 50Hz single phase socket. Two ON/OFF switches are provided on the unit for separate control of FAN and HUMIDIFIER. On the ROTATING model an additional switch enables the SWING function.

2.4 Water/chemicals supply

- HUMIDIFICATION/COOLING: manually fill the machine's built-in tank (120 liter capacity) with clean water from the water mains. For the specifications of the water to be used, see paragraph 2.1. During operation, regularly check the water level in the tank on the graduated scale and top up when necessary.
- NEBULIZATION: fill the built-in tank with an approved/recommended disinfecting solution. according to the instructions of the chemical product's manufacturer.



- Before filling the tank, make sure that the unit is unplugged.
- When handling chemicals, take all required precautions prescribed by the safety symbols, instructions and data sheets of the products used, including, for example, the mandatory use of personal protection equipment such as gloves, gowns, shoe covers, head covers, masks, respirators, eye protection means, face shields and goggles.

3 - OPERATION

3.1 Preliminary operations

Before operation, check that:

- The appliance is placed in a stable, flat and level position, with the wheel brake locked;
- The power cable is connected to a earthed outlet;
- The power cable is correctly positioned and not squashed or overstretched;
- The unit is free from obstructions and clean;
- The water tank contains pure water or an approved cleaning solution;
- The water supply and return pipes are connected.

3.2 First start-up checks

- Set the "FAN" and "HUMIDIFIER" switches to I (ON) on the control panel to enable and check the ventilation and humidification functions. (Fig. 3.2.1)
- **PowerMister Rotating:** in addition, set the "ROTATION" switch to I (ON) to enable and check the automatic side swinging on the fan/humidifier unit. The unit will swing slowly on a 90° angle from right to left and vice versa in about 45 s to optimize the distribution of the nebulized solution in the room (Fig. 3.2.2)



Fig. 3.2.1 - PowerMister



Fig. 3.2.2 - PowerMister Rotating

- Check the correct direction of air flow and disc rotation. (Fig. 3.2.3)

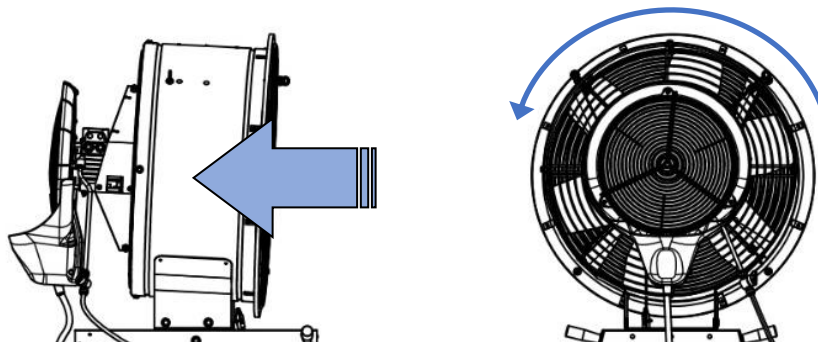


Fig. 3.2.3

- Open the water control valve and check that there are no leaks in the circuit.



The pump must never function dry. Add water or a solution to the tank regularly before operating the unit to prevent damages to the pump.
The temperature of the liquids and solutions used must not exceed 35°C.

3.3 Start-up and operation

- Set the “FAN” and “HUMIDIFIER” switches to I (ON) (Fig. 3.2.1) to enable the ventilation and humidification functions.
- **PowerMister Rotating:** in addition, set the “ROTATION” switch to I (ON) to enable the automatic side swinging on the fan/humidifier assembly. The assembly will rotate slowly on a 90° angle from right to left and vice versa in about 45 s. (Fig. 3.2.2)

Use the I/O (ON/OFF) switches to start the fan, pump and (on the ROTATING model) swing options as desired (see also previous section 3.2). The pump, located at the bottom of the tank, circulates the water to the rotating disc, which nebulises it, and the fan creates an airflow that distributes the mist into the room. On the ROTATING model, the swing option improves the mist distribution in the surrounding area. The water that has not been atomised collects in the tray and goes back to the tank through the return pipe. For ventilation only, set the HUMIDIFIER switch to 0 (OFF).

During operation:



- Check the water level in the tank regularly on the graduated scale and top up according to the water consumption of the humidifier.
- Do not move the appliance while it is operating. Switch off and unplug the appliance before moving it.



- Do not disconnect the power cable while the machine is powered. Turn off all switches and unplug the unit after use and before maintenance.
- In the event of unexpected stoppage or other malfunction, refer to Chapter 7 "Troubleshooting".



ROTATING model: EMERGENCY STOP

In the event of abnormal operation, push the red emergency stop pushbutton (Fig. 3.2.2) on the control panel to stop the machine immediately.

WARNING FOR CLEANING/DISINFECTION



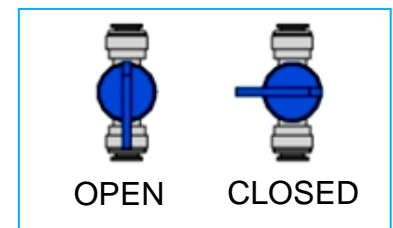
STRICTLY OBSERVE THE CLEANING/DISINFECTION PROTOCOLS ESTABLISHED BY THE MANUFACTURER OF THE CHEMICALS USED REGARDING, FOR EXAMPLE:

- removal of persons, animals and materials before any treatment
- operating times/cycles
- rinsing after any treatment
- ventilation and room air renewal
- drying
- inspections

3.4 Adjustment of the water/solution flow rate

Adjust the water/solution flow rate by turning the regulating valve on the delivery pipe until fine mist is obtained without droplets being dragged from the rotating disc. Centrifugal humidifiers produce water droplets of varying sizes, on average between 10 and 30 µm. The size of the droplets produced depends on the setting of the flow rate and the environmental conditions.

The **PowerMister** can atomise up to a maximum of 40 l/h of water or cleaning solution. However, an excessive flowrate could increase the droplet size and adversely affect the mist quality.



3.5 Stop

After use:

- Switch off the machine by setting the switches to the '0' (OFF) position.
- Disconnect the plug.
- Empty the tank completely by removing the drain plug at the bottom on the front side, after positioning the appliance above a suitable drainage point.
- **NEBULIZATION OF CHEMICALS:** ventilate the room according to the chemical specifications and drain the cleaning solution leftover in the tank. **After each cleaning or disinfection treatment, run the machine with fresh, clean water for some minutes to rinse the internal parts.**



WARNING! (HUMIDIFICATION/COOLING)

Stagnant water can cause the growth of harmful bacteria and microorganisms. It is therefore essential to prevent water stagnation.

Drain the water from the tank regularly after use. Never leave stagnant water in the tank when the machine is not in use for more than one day. (see also par. 4.2. "Cleaning the tank"). As well as for safety reasons, regular water renewal is also necessary to keep the appliance clean and free from limescale, mold, etc.

WARNING! (NEBULIZATION OF CHEMICALS)

Dispose of chemical products and solutions according to all laws and regulations in force.

4 - MAINTENANCE



The operations described in this chapter must only be carried out by authorised and qualified personnel, using suitable personal protective equipment. Before carrying out any work, disconnect the appliance from the electricity and water supplies.

Periodically check the water flow to the rotating disc. Adjust the flow regulator if necessary. Keep discs, tank and internal parts clean to avoid dirt build-up.

4.1 Cleaning the disc

- Keep the disc clean to prevent limescale build-up or dirt accumulation that could cause increased vibration or coarse spraying.
- To clean the rotating disc, use a soft, damp cloth and a non-toxic, solvent-free cleaning agent, wiping without applying excessive pressure.
- **Do not use solvents.**
- The fixed disk should be cleaned with a brush with stiff bristles, rubbing the teeth taking care not to damage them. Any limescale deposits can be removed with vinegar, lemon or another specific, non-toxic, solvent-free product.

4.2 Cleaning the tank

Emptying the tank and renewing the water (after each use)

- Place the appliance over a suitable drainage point and unscrew the front drainage cap of the tank to completely remove the water contained.
- When the operation is complete, be sure to reinsert and tighten the drain plug.
- Before using the machine again, fill the tank with clean tap water.

Complete tank cleaning

If more thorough cleaning of the tank is required, disconnect the pump power cable, disconnect the discharge pipe from the pump, remove the discharge and return pipes and remove the tank from the trolley to facilitate cleaning.

- Clean the inside of the tank using a non-toxic, solvent-free cleaning agent, using a pressurised water jet to remove any dirt, scale, etc. that is particularly difficult to remove.
- Rinse and reposition the tank on the trolley, making sure to reinsert the drain plug and reconnect the pump power cable and the delivery and return hoses.

Cleaning the drip tray

- Inspect and clean the drip tray periodically.
- To access the tray, unscrew the two screws securing the cover and remove it.
- Clean the inside of the tray with a cloth or sponge, rubbing the walls gently. Do not use solvents.

4.3 Replacing and cleaning the pump

To replace the pump, proceed as follows:

- Disconnect the power cord of the pump
- Remove the tank cover
- Disconnect the pump from the bottom of the tank and pull it out through the filling hole;

- Disconnect the discharge pipe from the pump to be replaced and connect it to the new pump;
- Insert the pump into the tank and secure it to the bottom using the suction cups;
- Reconnect the power cord and start the machine to check operation.

The pump does not require any special maintenance. However, it is advisable to clean the internal rotating parts periodically, depending on the quality of the water used. For this purpose:

- Disconnect and remove the pump from the tank as described above;
- Remove the pressure pipe, using a screwdriver if necessary;
- Remove and check the rotor and impeller and clean them with lukewarm water and a brush. Any limescale deposits can be removed with vinegar, lemon or special products. Do not use solvents;
- Refit the nozzle, reposition the pump inside the tank and reconnect the connector on the power cable.

4.4 Replacing the rotating disc

- Remove the front protection grille by unscrewing the 3 fixing screws.
- Remove the central cap of the rotating disc by pushing it out with a small slotted screwdriver (Fig. 4.4.1).
- Using a screwdriver (hex. 7), loosen the M4x16 fixing screw of the rotating disc to the motor shaft and its washer (Fig. 4.4.2).

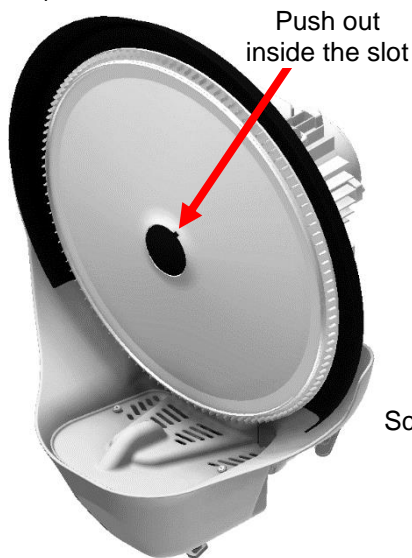


Fig. 4.4.1

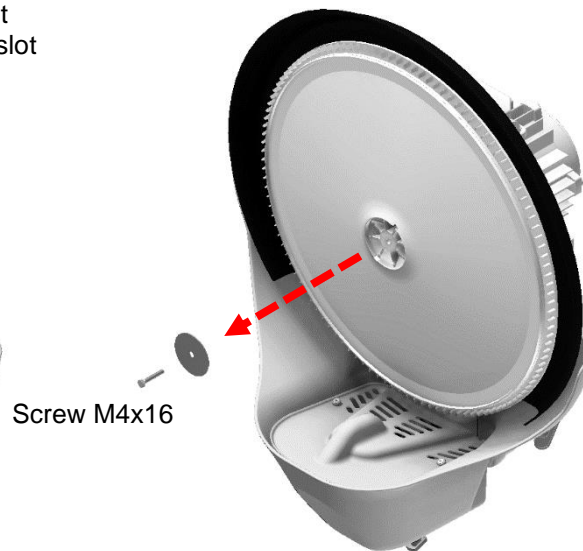


Fig. 4.4.2

- Insert the M8x40 screw supplied with the unit into the central hole of the rotating disc (Fig. 4.4.3)
- Use a screwdriver (hex. 13) to turn the screw, which will push the disc out effortlessly when it enters the hole. (Fig. 4.4.4)

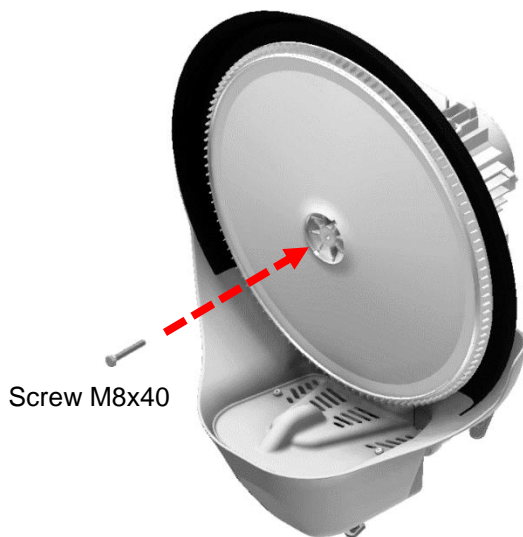


Fig. 4.4.3

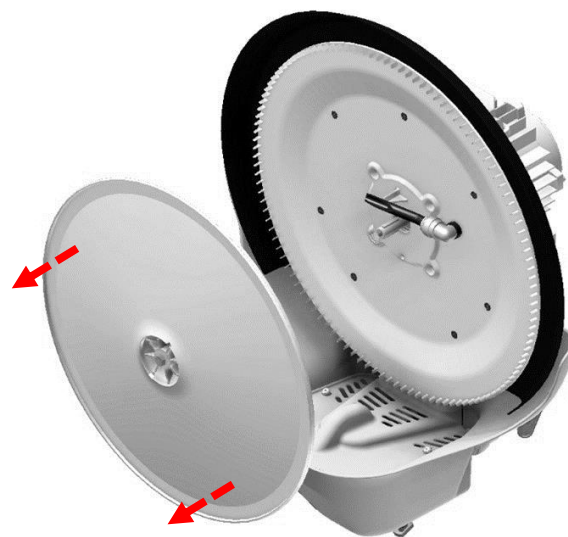


Fig. 4.4.4

- Once the disc has been disconnected, remove the M8x40 screw by unscrewing it from the rotating disc.
- Apply a small amount of grease on the motor shaft and fit the new disc, making sure the keys are aligned and centred, without tapping or forcing. Replace the washer, M4 screw and plug. Check that the 4 mm thick spacer (see section 5.3 "Spare parts list" item 5) is correctly positioned between fixed disc and rotating disc.

4.6 Replacing the nozzle

- After removing the rotating disc (see section 4.4), remove the nozzle by unscrewing the two fixing screws.
- Push the grey ring on the elbow connector (see section 5.3 "Spare parts list" item 19) rearwards and, while holding it down, pull the nozzle to be replaced.
- Position the new nozzle by repeating the sequence in reverse.

4.7 Accessories

A full range of accessories for your UF Mobile is available on request.
Ask your dealer for the accessories catalogue for more details.

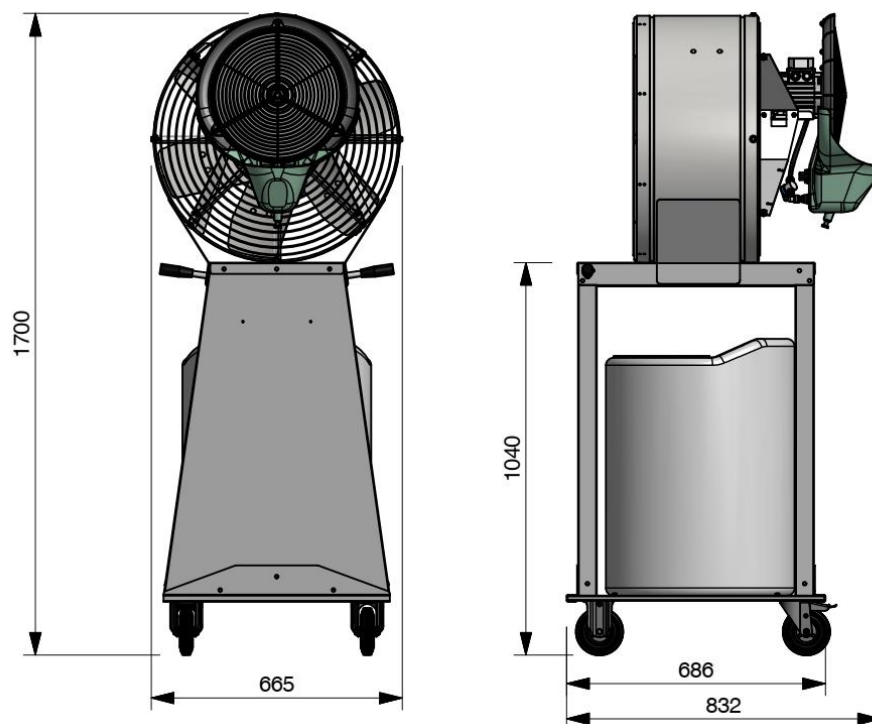
5 - TECHNICAL SPECIFICATIONS

5.1 Technical data

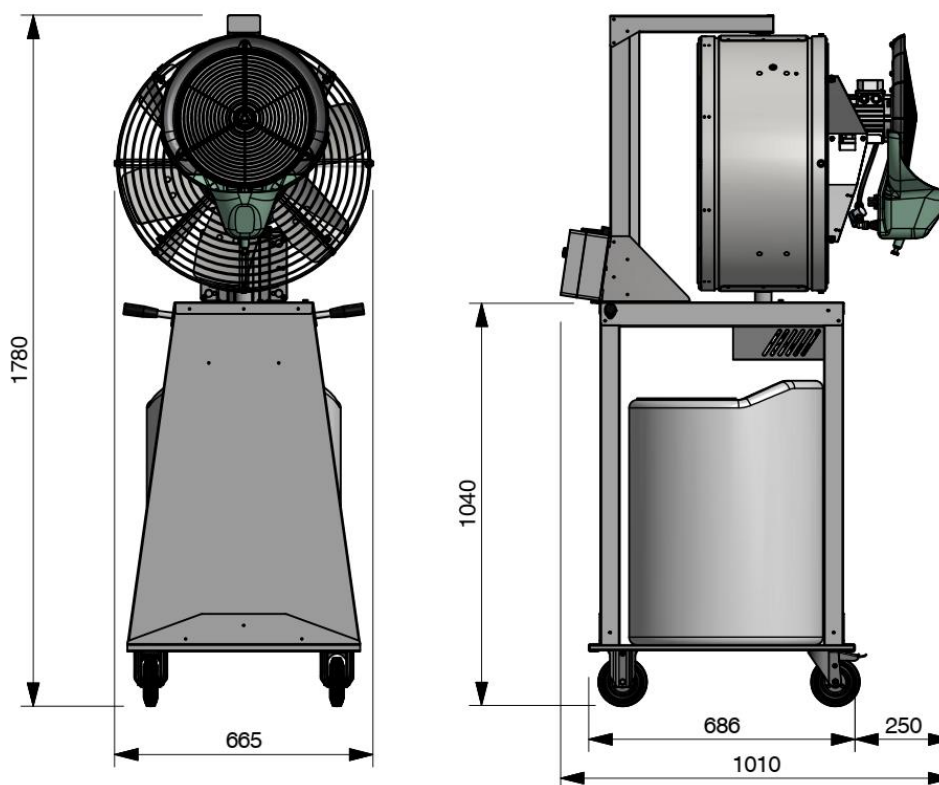
		PowerMister	PowerMister Rotating
Atomisation capacity	l/h	up to 40	up to 40
Power supply		~ single-phase	~ single-phase
IP rating		IP55	IP55
Weight	kg	76	90
Airflow rate	m ³ /h	8000	8000
Power	W	700	815
Voltage	V/Hz	230/50	230/50
Current	A	3.6	4.1

5.2 Overall dimensions

PowerMister



PowerMister Rotating

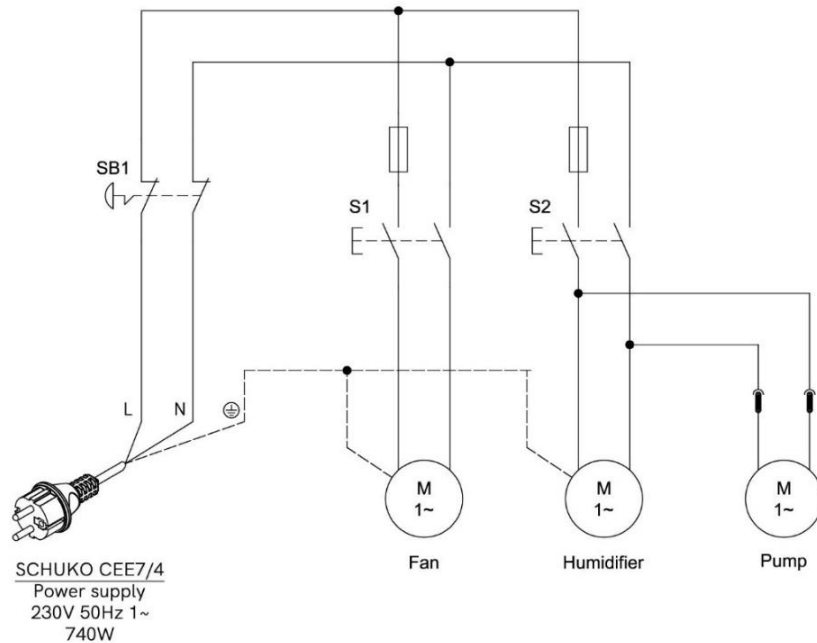


5.3 Wiring diagrams

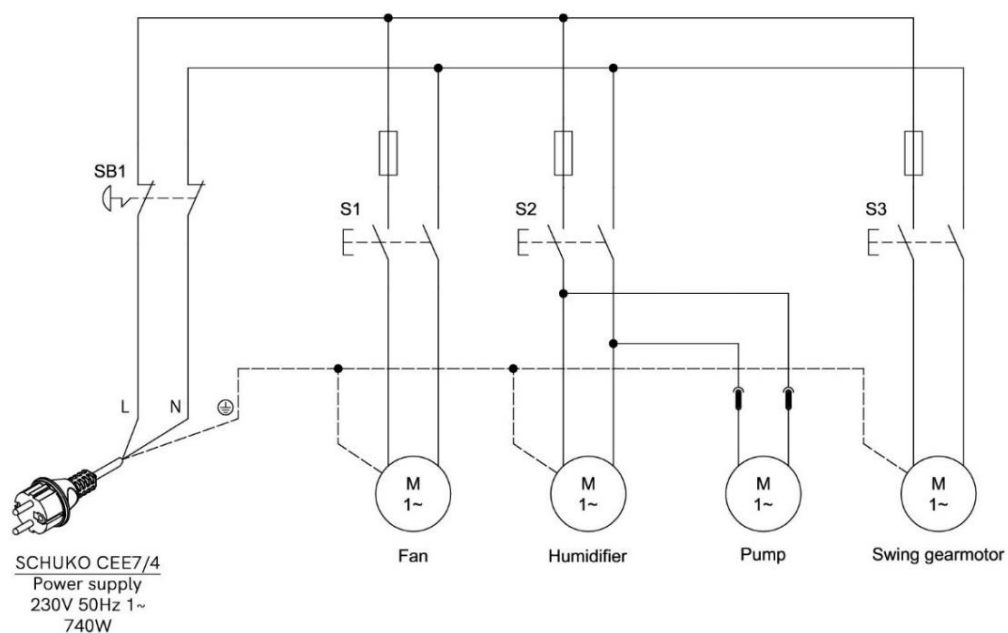
Check that the electrical ratings of the power supply system comply with the data plate.
Provide a magnetothermal differential circuit breaker on the power line.
The humidifier motor and the pump motor are equipped with a self-reset thermal protector, which interrupts the power phase in case of abnormal overheating of the windings: see par. 6 "Troubleshooting Guide". In addition, the motors are protected by fuses.



PowerMister



PowerMister Rotating

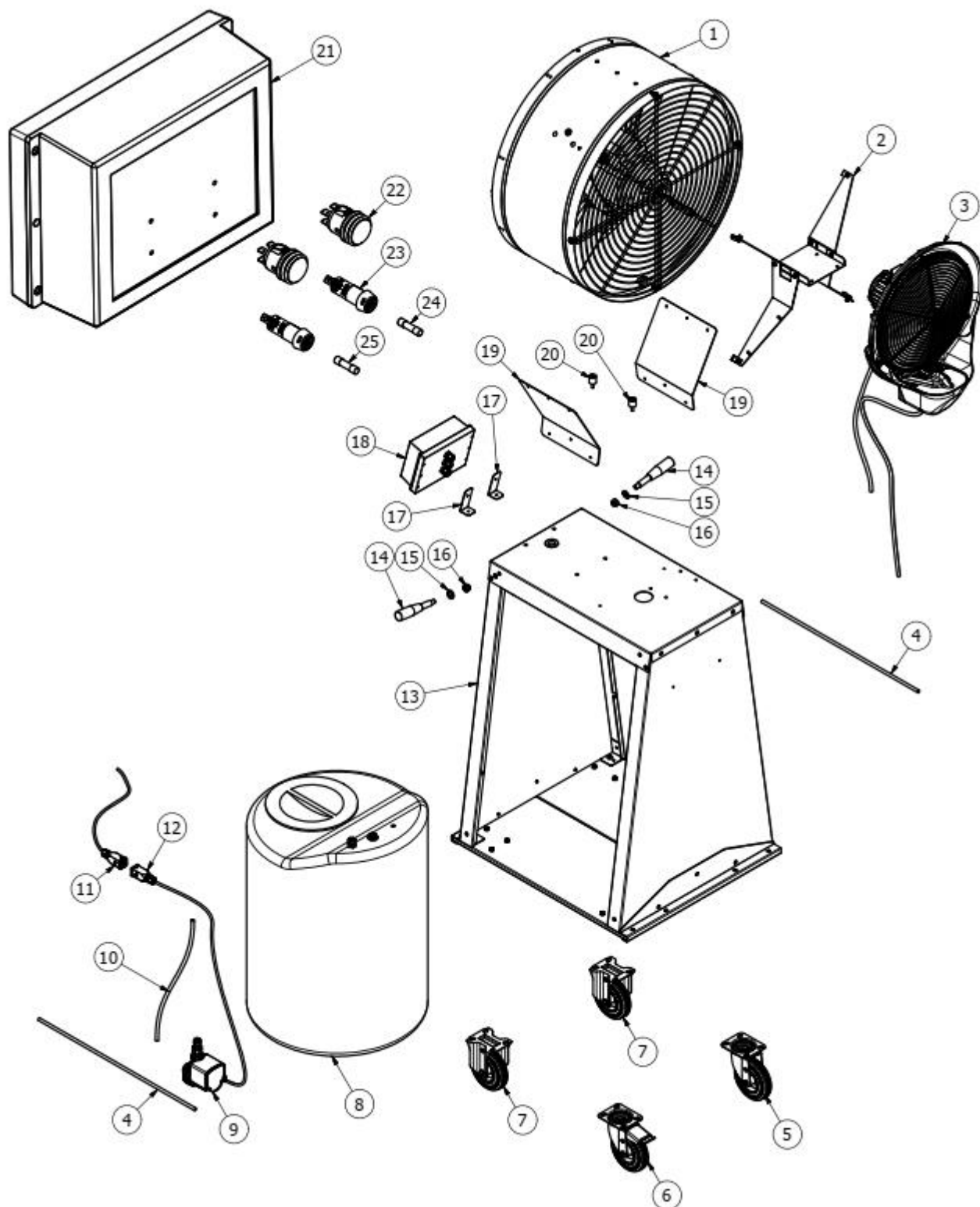


If the power cable is damaged, it must be replaced by the manufacturer or his technical service or a similarly qualified person, to prevent any risk.

6. SPARE PARTS LIST

PowerMister
Art. No. 0811000

GENERAL ASSEMBLY

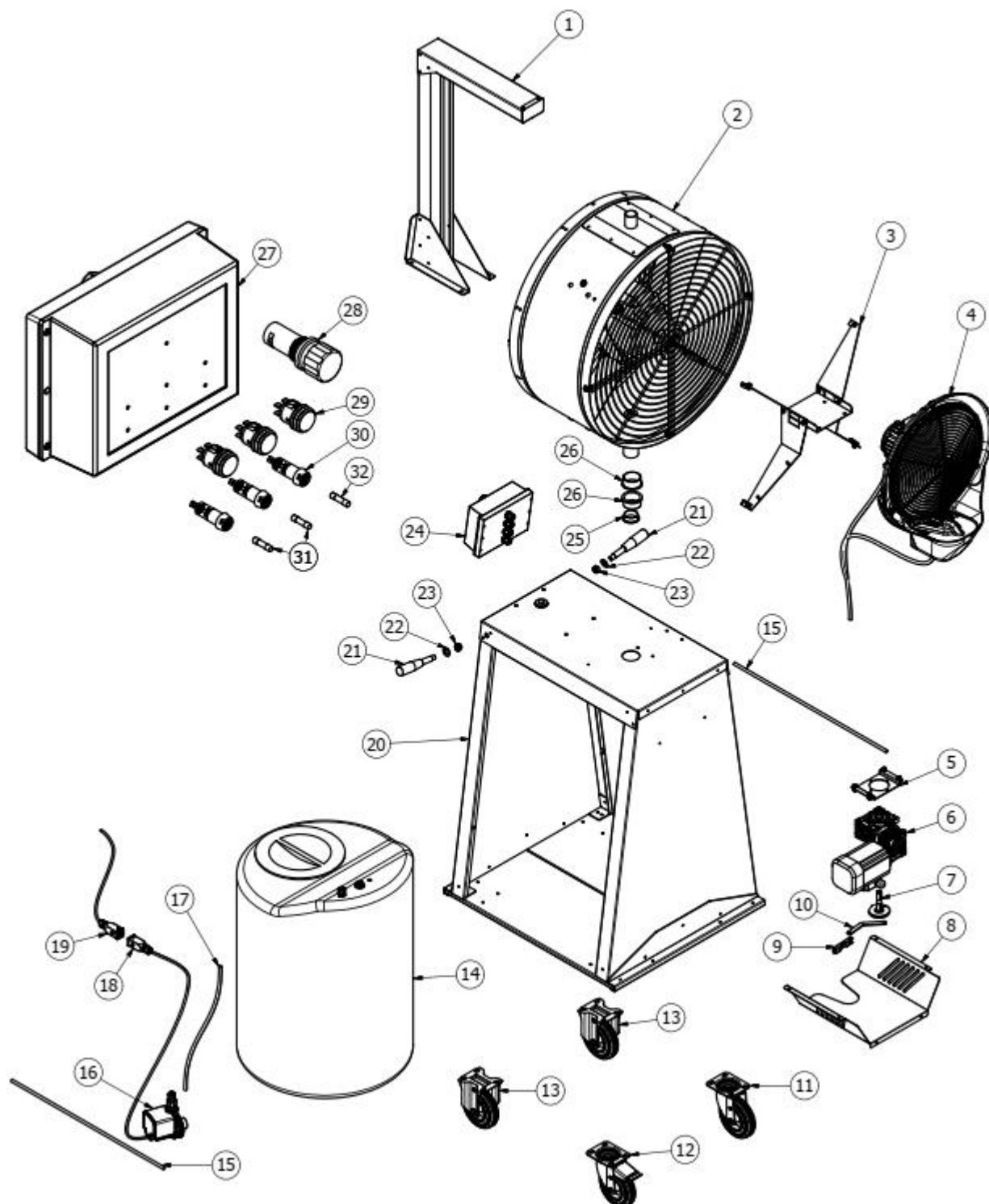


Pos.	Code	Description
1	1951650	Fan w/support brackets
2	1951602	Humidifier support bracket
3	1951803	Humidifier Assembly
4	1951609	Side rod
5	7208026	Pivoting wheel
6	7208027	Pivoting wheel w/brake
7	7208025	Fixed wheel
8	1951608	Tank 120 liter assembly
9	1951610	Pump 230V 50Hz
10	1951611	Hose pump-tray
11	1951612	Pump connector female
12	1951613	Pump connector male
13	1951614	Stainless steel trolley
14	7205061	Handle
15	6003020	Washer Ø12
16	6002509	Self-locking nut M12
17	1951020	Control box support
18	1952001	Control box assembly
19	1951019	Fan support bracket
20	7205020	Damping spacer

21	1952050	Control box enclosure w/cable glands
22	7304200	Illuminated pushbutton
23	7301110	Fuseholder
24	7304005	Fuse 1A
25	7304006	Fuse 3,15A

PowerMister Rotating
Art. No. 0811001

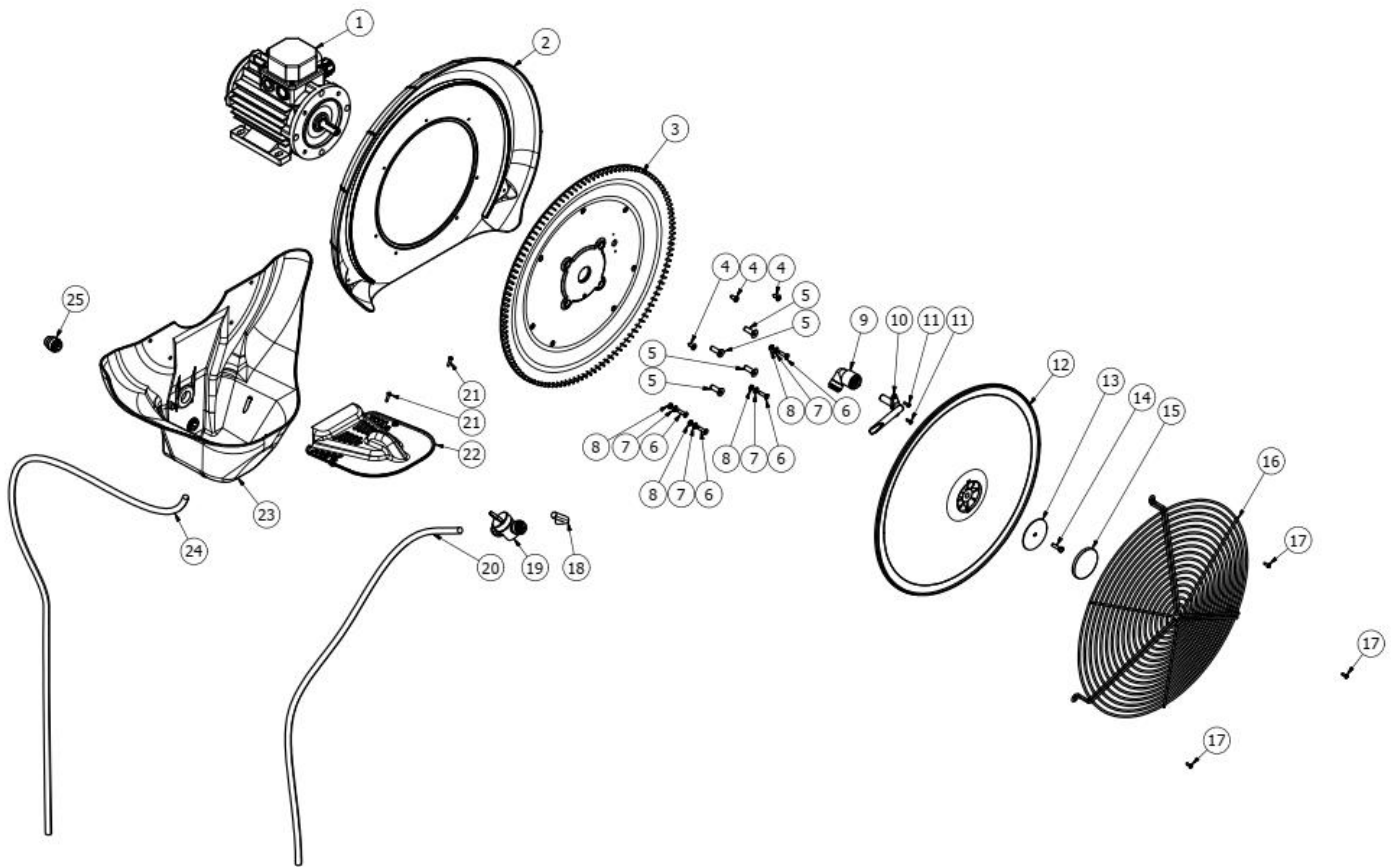
GENERAL ASSEMBLY



Pos.	Code	Description
1	1951600	Rotating unit bracket
2	1951601	Fan assembly
3	1951602	Humidifier support
4	1951803	Humidifier
5	1951006	Gearbox support
6	1951063	Rotation gearbox
7	1951604	Rotation shaft
8	1951605	Gearbox guard
9	1951606	Lever
10	1951607	Rotation lever w/bushes
11	7208026	Pivoting wheel
12	7208027	Pivoting wheel w/brake
13	7208025	Fixed wheel
14	1951608	Tank (120 liter)
15	1951609	Side rod
16	1951610	Pump 230V 50Hz
17	1951611	Hose pump-tray
18	1951612	Pump connector F
19	1951613	Pump connector M
20	1951614	Stainless steel trolley
21	7205061	Handle
22	6003020	Washer Ø12
23	6002509	Self-locking nut M12
24	1952000	Control box assembly
25	7202500	Bush Ø32
26	7202501	Bush Ø45

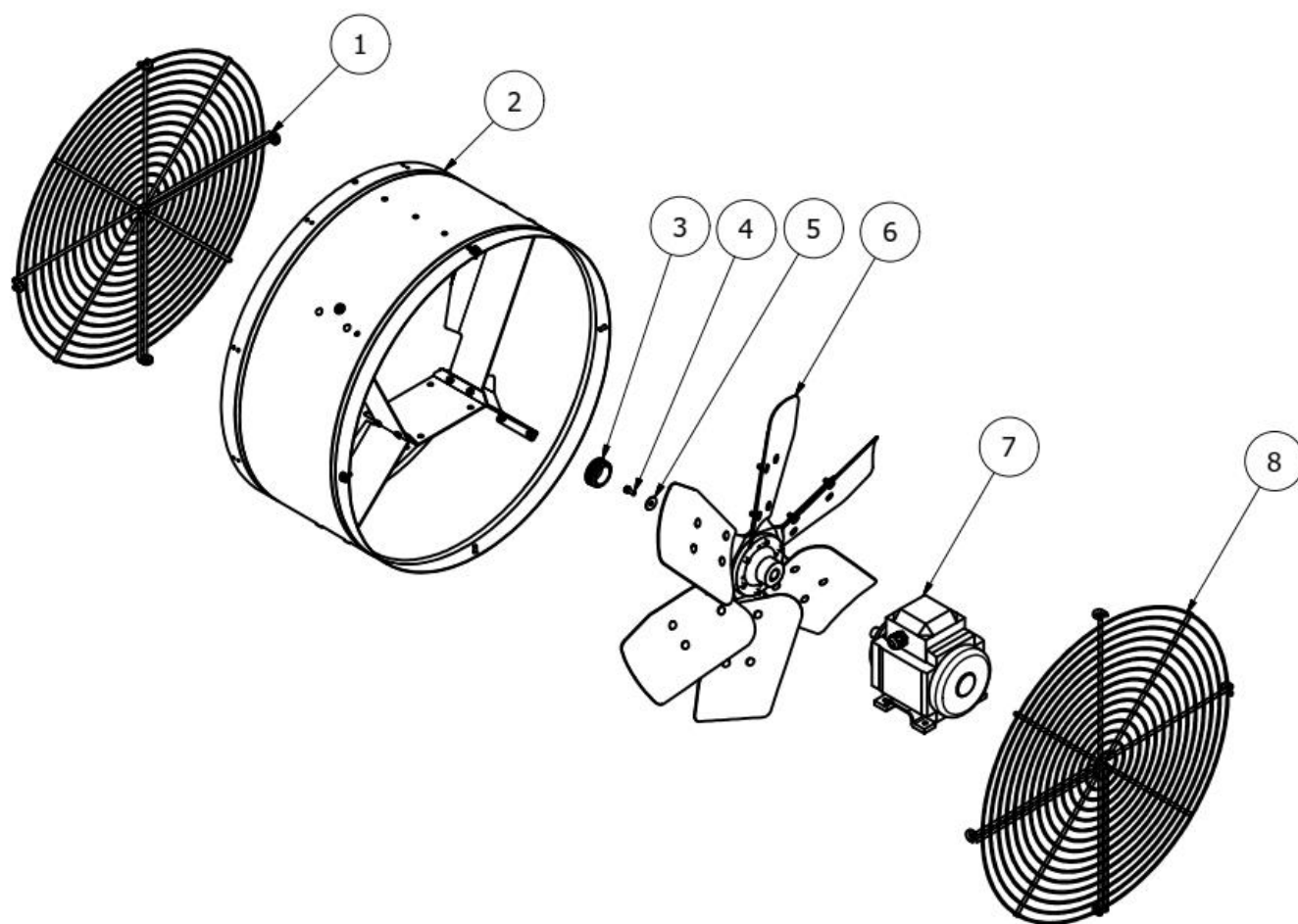
27	1952050	Control box casing w/cable glands
28	7301006	Emergency pushbutton
29	7304200	Illuminated pushbutton
30	7301110	Fuseholder
31	7304005	Fuse 3,15A
32	7304006	Fuse 1A

HUMIDIFIER ASSEMBLY



Pos.	Code	Description
1	5000000	Motor 230V 50Hz
2	1800062	Rear cover
3	1800061	Fixed disk
4	6002000	Screw 4.2X13 DIN 7982
5	6001502	Screw M6X20 DIN 7991
6	6001501	Screw M4x16 din 7991
7	6003000	Washer 4,3X9 DIN 125
8	6002500	Nut M4 DIN 934
9	8202009	Elbow connector 3/8"
10	1800022	Nozzle
11	6002003	Screw 2,9X9,5 DIN 7981
12	1800060	Rotary disk
13	1801006	Washer
14	6001001	Screw M4X16 DIN 933
15	1800003	Rotary disk cap
16	1801030	Protection grille (10mm pitch)
17	6002004	Screw 4,2X9,5 DIN 7981
18	1951670	Valve/disk pipe 3/8"
19	8202000	Valve 3/8"
20	1951671	Tank/valve pipe 3/8"
21	6002002	Screw 2,9X19 DIN 7982
22	1800017	Tray cover (green)
23	1951800	Water tray (green)
24	1951672	Drainpipe 3/8"
25	8202017	End stop 3/8"

FAN ASSEMBLY



Pos.	Code	Description
1	1602500	Rear grid
2	1951660	Fan duct w/motor support (rotating version)
	1951661	Fan duct w/motor support (fixed version)
3	1602501	Cover cap
4	6001025	Screw M6x16
5	6003010	Washer 6x24
6	1602502	Propeller assembly
7	1602503	Motor 230V 50Hz 370W
8	1602504	Front grid

7. TROUBLESHOOTING GUIDE



The operations described in this chapter must only be carried out by authorised and qualified personnel, using suitable personal protective equipment. Before carrying out any work, disconnect the appliance from the electricity and water supplies.

PROBLEM	CAUSE	SOLUTION
The machine does not start	No power, plug not inserted, switches Off	Check connections and mains voltage
The rotating disc and fan do not rotate (or stop during operation) but water is recirculated by the pump.	No power to the motor, fan switch Off, burnt fuse(s)	Check motor supply lines and fuses
	The motor is defective	Check and replace the motor or capacitor if necessary
	Triggering of the thermal motor protection (overheating)	Disconnect power, identify and eliminate the cause of overheating. Wait for the motor to cool down and restart the appliance.
The rotating disc and the fan turn but the water is not sprayed.	Pump power failure, pump switch Off	Check the pump supply line
	Water supply circuit is disconnected	Check water supply pipe and flow control valve
	The pump is clogged	Clean the pump and tank
	The pump is full of air	Bleed the hydraulic circuit by disconnecting the hose from the control valve.
	The pump is faulty	Check and replace if necessary
	The tank is empty	Check and top up with clean water
No rotation (rotating model)	Rotation switch is off, rotation gearbox is faulty, burnt fuse	Check, replace or repair as necessary
Spraying is coarse	The fixed disk is dirty	Cleaning the fixed disk
	The rotating disc is too far away from the fixed disc	Check that the 4 mm thick spacer is correctly positioned
	Nozzle dirty or clogged	Check nozzle, clean if necessary
The machine is noisy or vibrates	The rotating disc is broken or incorrectly mounted	Check and, if necessary, replace the rotating disc
	Defective motor or fan	Check and replace defective parts if necessary

SCHIPPERS EUROPE B.V.
Smaragdweg 60
5527 LB Hapert
Netherlands