



Kaycee

veterinary
products

INSTRUCTION AND
MAINTENANCE MANUAL

OVIJECTOR

HAND HELD SELF-FILLING REPEATER SYRINGE

ADJUSTABLE DOSAGE

MK1 0.1ml • 0.2ml • 0.3ml • 0.4ml • 0.5ml
0.6ml • 0.7ml • 0.8ml • 0.9ml • 1.0ml

MK2 0.5ml • 0.75ml • 1.0ml • 1.25ml • 1.5ml • 1.75ml • 2.0ml

MK3 1.0ml • 1.5ml • 2.0ml • 2.5ml • 3.0ml
3.5ml • 4.0ml • 4.5ml • 5.0ml



Kaycee

veterinary
products

Your Kaycee syringe is a hand-operated repeater syringe which has been designed for use with all oil and water-based vaccines. It is comfortable to handle and its ergonomic design allows long sessions without operator-fatigue.

This accurate, robust and easy to maintain device is factory set using digital calibration and will last many years if well maintained.

KAYCEE VETERINARY PRODUCTS LIMITED

14 Enterprise Park
Lewes Road
Lindfield
West Sussex
RH16 2LH
United Kingdom

T +44 (0)1444 482888

F +44 (0)1444 483383

E sales@kaycee.co.uk

1. Sterilisation

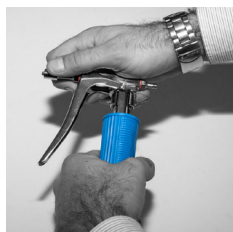
- a** Remove handgrip with an anticlockwise turn and set aside.

▲ DO NOT BOIL HANDGRIP

- b** Place syringe in distilled or previously boiled water and pump trigger several times to fill syringe.

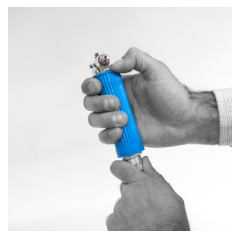
Add all other items for sterilising eg Hypodermic needles, vaccine feed tube, feed needle or Multifit Direct Bottlemount or Cap assembly and bottle (unscrew bottle from cap).

- c** Boil for 10 minutes.
- d** Allow to cool, refit handle and pump out water.



2. Setting the dose

The numbers on the dose knob show the dose amount in ml. In order to set the Ovijector to the dose required, twist the dose knob at the base of the handgrip. It will click into precise dose settings each complete turn. Read the dose setting at the extreme end of the handgrip.



3. Connect vaccine

The self-filling Kaycee syringes can be fitted with:

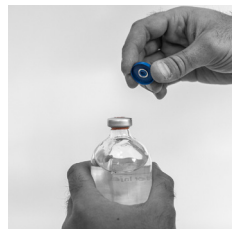
- a. rear connector and tube feed into vaccine container
- b. Multifit bottle holder
- c. Cap assembly and bottle.

- a** Fit the PVC feed tube to rear connector and short vaccine feed needle to the other end of the tube. Attach feed needle to vaccine container. If container is rigid, use of an air needle will be required to relieve vacuum;



▲ FAILURE TO RELIEVE VACUUM MAY RESULT IN UNDER-DOSING

- b (Please note the Multifit can be located on top or rear of vaccinator as required.)**



- To attach bottle to Multifit holder first remove red needle cover from air vent needle.
- Carefully remove the seal from the cap of the bottle, ensuring the remaining cap is left in place.
- Pierce centre of rubber seal firmly so bottle head enters 'crown' of Multifit holder.
- Slide and click ring completely over crown segments to lock bottle.
- If ring doesn't click over round crown segments, loosen crown anti-clockwise and try again.
- Once it has clicked, turn crown clockwise for final adjust.



- c** When using cap assembly and bottle, fill bottle with vaccine and screw inverted syringe firmly down onto bottle.
- d** Once vaccine is connected using desired attachment, fit hypodermic needle to front stem (ensuring needle is facing away from operator) and pump the trigger several times to prime the device until fluid flows from the needle. Your syringe is now ready for use.



4. Maintenance

Immediately after use, pump through with hot soapy water, followed by clean water. **This is essential to ensure blockages do not occur due to a build-up of residue and to promote the long life of your instrument.**

Remove piston and lubricate 'O'-ring with medicinal liquid paraffin or Caster oil and refit piston, do not interchange pistons between syringes as they are individually calibrated for accuracy.



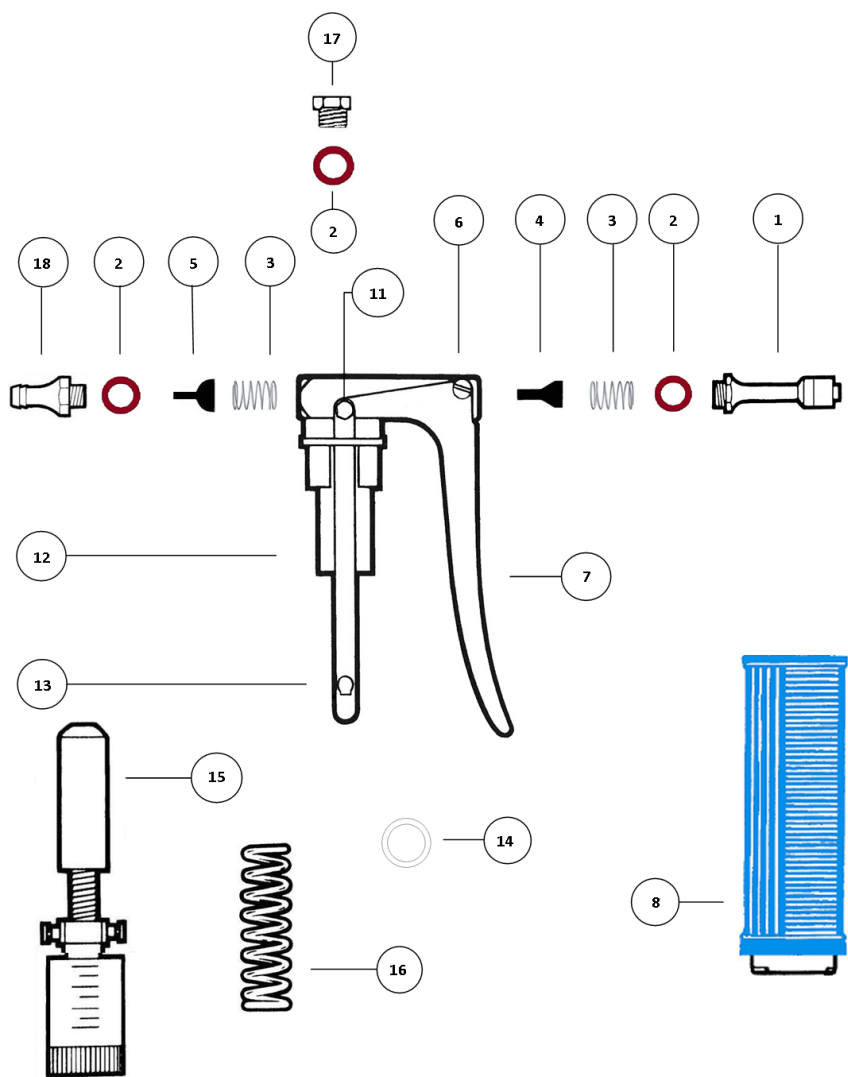
5. Troubleshooting

- a** If you experience difficulty when priming the syringe and vaccine is not initially drawn through, use a disposable syringe with a short piece of PVC tubing attached to the front stem to draw the vaccine through.
 - b** The syringe is designed and built to give a high degree of accuracy. If accuracy should fail, check for residual matter stuck on the valves.
 - c** If after long service there is leakage from the base of the handgrip, remove piston and fit new 'o' ring and lubricate with Liquid paraffin or Caster oil before replacing piston.
- Replace parts as in diagram ensuring correct orientation of suction valve.
 - Unscrew and remove delivery option. i.e. Rear connector, multifit bottle holder or cap assembly bottlemount.
 - Ensure suction valve and valve spring are clean and undamaged and no residual matter appears in rear connector or rear of vaccinator.

Parts list - Rear Connector Fitting

▲ PLEASE STATE VACCINATOR MODEL WHEN ORDERING

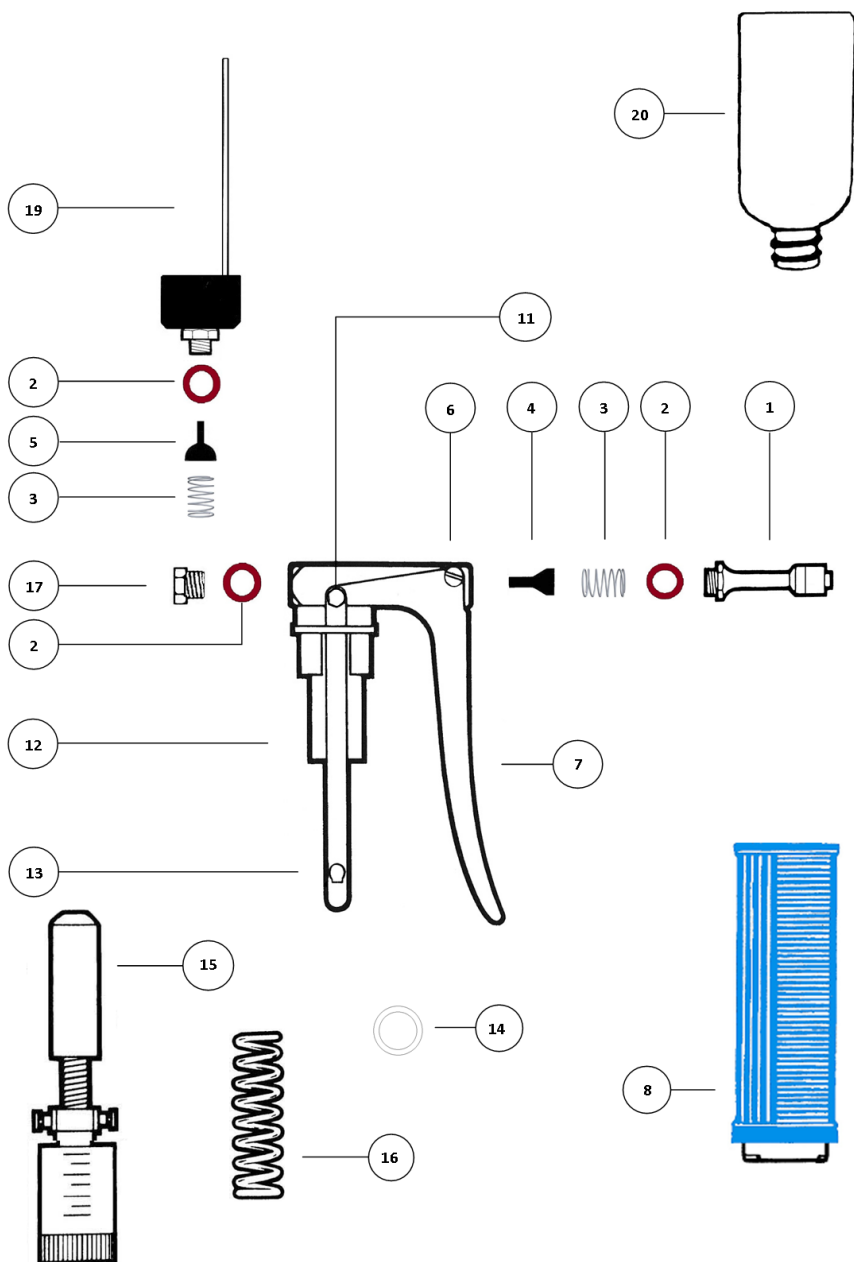
OVIJECTOR (REAR CONNECTOR FITTING)		Cat. No
01	Luer lock stem 40mm	10091
	Luer lock stem 60mm	10092
02	Fibre washer	10157
03	Valve spring	10169
04	Delivery valve (conical)	10170
05	Suction valve (semi-sphere)	10182
06	Trigger screw	10194
07	Trigger	10200
08	Handle grip MK1, MK2	10224
	Handle grip MK3	10236
11	Hexagon screw (plain)	10273
12	Main body MK1	10327
	Main body MK2	10339
	Main body MK3	10340
13	Side arm	10418
14	'O'-Ring MK1	10455
	'O'-Ring MK2	10467
	'O'-Ring MK3	10479
15	Piston MK1	10522
	Piston MK2	10534
	Piston MK3	10546
16	Main spring MK1, MK2	10571
	Main spring MK3	10583
17	Chest plug	10280
OV	Spares kit MK1	10789
OV	Spares kit MK2	10790
OV	Spares kit MK3	10807



Parts list - Cap Assembly Bottle

▲ PLEASE STATE VACCINATOR MODEL WHEN ORDERING

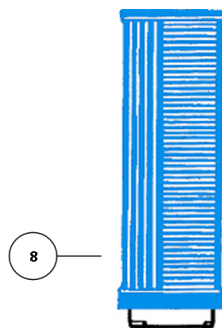
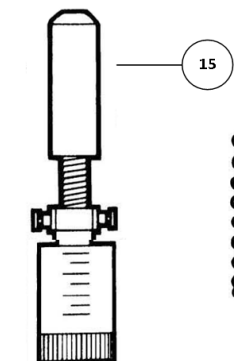
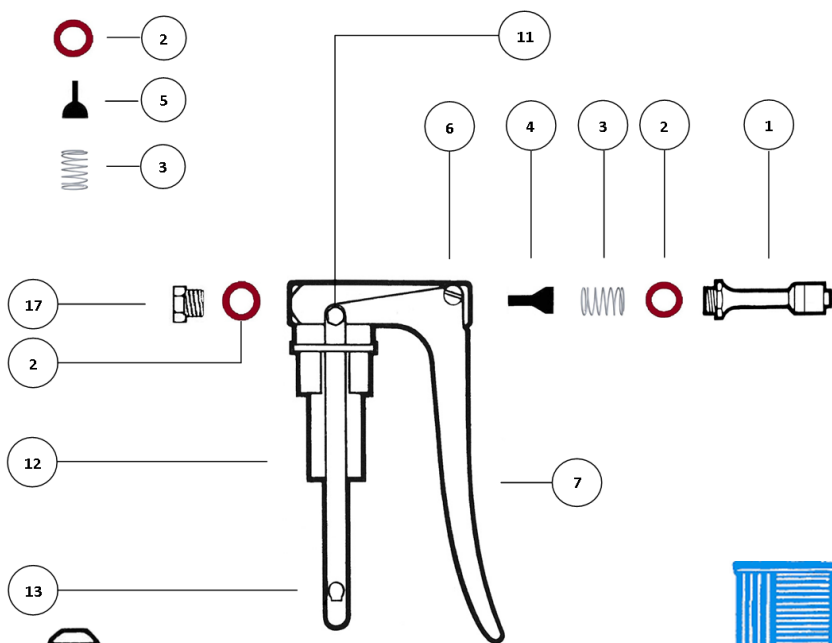
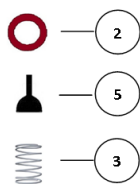
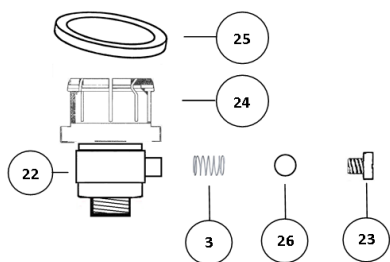
OVIJECTOR (CAP ASSEMBLY BOTTLE)		Cat. No
01	Luer lock stem 40mm	10091
	Luer lock stem 60mm	10092
02	Fibre washer	10157
03	Valve spring	10169
04	Delivery valve (conical)	10170
05	Suction valve (semi-sphere)	10182
06	Trigger screw	10194
07	Trigger	10200
08	Handle grip MK1, MK2	10224
	Handle grip MK3	10236
11	Hexagon screw (plain)	10273
12	Main body MK1	10327
	Main body MK2	10339
	Main body MK3	10340
13	Side arm	10418
14	'O'-Ring MK1	10455
	'O'-Ring MK2	10467
	'O'-Ring MK3	10479
15	Piston MK1	10522
	Piston MK2	10534
	Piston MK3	10546
16	Main spring MK1, MK2	10571
	Main spring MK3	10583
17	Chest plug	10280
19	Cap assembly	10297
20	Bottle 125ml	10364
21	Multifit attachment with 22mm crown	10821
22	Needle chest	10822
23	Valve cap seat	10830
24	Crown 22mm	10825
25	Locking ring 22mm	10826
26	Ball valve	10824
OV	Spares kit MK1	10789
OV	Spares kit MK2	10790
OV	Spares kit MK3	10807



Parts list - Multifit Bottle Holder

▲ PLEASE STATE VACCINATOR MODEL WHEN ORDERING

OVIJECTOR (MULTIFIT BOTTLE HOLDER)		Cat. No
01	Luer lock stem 40mm	10091
	Luer lock stem 60mm	10092
02	Fibre washer	10157
03	Valve spring	10169
04	Delivery valve (conical)	10170
05	Suction valve (semi-sphere)	10182
06	Trigger screw	10194
07	Trigger	10200
08	Handle grip MK1, MK2	10224
	Handle grip MK3	10236
11	Hexagon screw (plain)	10273
12	Main body MK1	10327
	Main body MK2	10339
	Main body MK3	10340
13	Side arm	10418
14	'O'-Ring MK1	10455
	'O'-Ring MK2	10467
	'O'-Ring MK3	10479
15	Piston MK1	10522
	Piston MK2	10534
	Piston MK3	10546
16	Main spring MK1, MK2	10571
	Main spring MK3	10583
17	Chest plug	10280
19	Cap assembly	10297
20	Bottle 125ml	10364
21	Multifit attachment with 22mm crown	10821
22	Needle chest	10822
23	Valve cap seat	10830
24	Crown 22mm	10825
25	Locking ring 22mm	10826
26	Ball valve	10824
OV	Spares kit MK1 with multifit bottle fitting	10808
OV	Spares kit MK2 with multifit bottle fitting	10809
OV	Spares kit MK3 with multifit bottle fitting	10810



Distributor:



www.kaycee.co.uk

Visit our website to see our full range of syringes and accessories