

THE ULTIMATE BMV™

NZ Patent Application No. 332695

NZ Patent Application
No. 529053

FEATURES

- NRG™ Cap
- Takes most Luer specification needles
- Ergonomic V-Grip design
- Suitable for bottles up to 250ml
- Dose Indicator Window
- Adjustable hand span
- Bottle cradle (optional)
- Soft Grip fingerbar (optional)

APPLICATORS

- 0.5ml – 0.05ml up to 0.5ml in 0.05ml increments
- 2ml – 0.2ml up to 2ml in 0.2ml increments
- 6ml – 0.5ml up to 6ml in 0.5ml increments

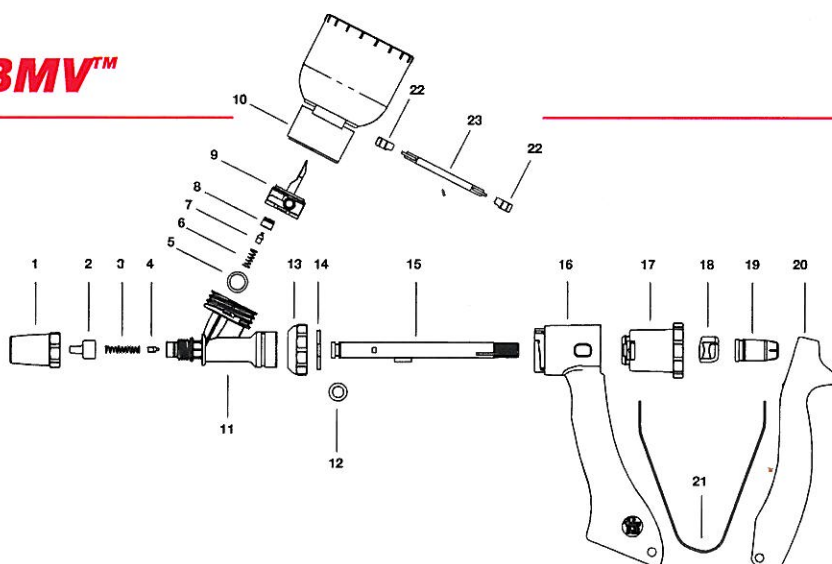
metal needle nib (optional)

textured grip fingerbar

standard bottle cap

A11

THE ULTIMATE BMV™



TECHNICAL SPECIFICATIONS

No.	Component	No.	Component
1	End Cap	13	Barrel Collar
2	Plastic Nib	14	C Clip
3	Outlet Spring	15	Piston
4	Outlet Valve	16	Finger Bar
5	O ring	17	Selector
6	Inlet Spring	18	Adjuster Pivot
7	Inlet Valve	19	Adjuster
8	Inlet Valve Retainer	20	Rear Handle
9	Spike Collar	21	Handle Spring
10	Bottle Cradle	22	Slide Grips
11	Barrel	23	Slide
12	Piston O Ring		

Technical Specification Materials
 Body Glass Reinforced Polypropylene
 Barrel PETG
 O Rings Silicone, Fluorosilicone, Viton



A11

THE BMV™ OPERATING INSTRUCTIONS

OPERATING INSTRUCTIONS

- 1 Remove the bottle retainer cap from applicator.
- 2 Slide the retaining cap onto product bottle via the opening provided. Refer to Diagram 1.
- 3 Gently pierce the rubber cap on product bottle with the draw off spike, and tighten the retaining cap firmly onto applicator.
- 4 Set applicator at maximum dose.
- 5 While holding applicator in horizontal position, squeeze the handle and release to allow product to enter barrel.
- 6 Adjust selector to desired dose rate. Turn the dose selector until front of piston is in line with the dose rate as marked on the barrel.

NB. The head of the piston on the 2ml BMV is the main section above the o-ring and not the end of the extension.

- 7 Continue squeezing and releasing handle until all air is expelled from the barrel.

NB. To remove trapped air bubble in barrel, tilt the applicator to a 45° angle and repeat step 7 until all air is expelled.

NEEDLE FITTING INSTRUCTIONS

Note that the end cap does not need to be removed when fitting needles.

- 1 Attachment of needle: DO NOT REMOVE CAP. Simply screw needle in clockwise direction until secure. (Finger tight)
- 2 Removal of needle: Turn needle anti-clockwise and pull gently.

NB. If the needle is difficult to remove twist the end cap anticlockwise to loosen needle. Tighten end cap back on to applicator.

CLEANING INSTRUCTIONS

1. Flush the residue from the barrel.
2. Flush hot soapy water through applicator until product is removed. Flush with clean water.
3. Remove barrel from finger bar and soak the o-ring on the piston with vegetable oil (DO NOT use mineral oil).
4. Reattach barrel to the finger bar and store applicator in a cool dry place.

