

## ECF calf milk feeder system

Satisfying feeding  
for man and animal

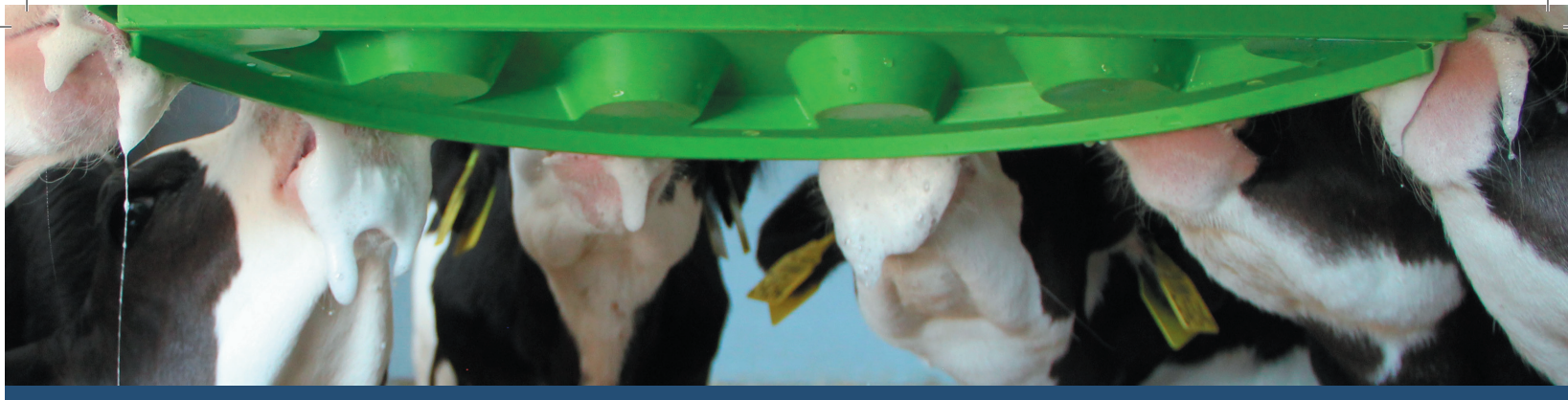


### ECF calf milk feeder system:

- » Easy to keep clean = **hygiene**
- » Teat firmly seated in the wall  
= **easier and faster to clean**
- » Steeply sloped bottom = **less waste**
- » Secure lid = **no flies, dirt, contamination**
- » Easy teat exchange = **time saver**
- » Height adjustable = **universal support, natural calf feeding position**
- » Slow milk flow = **plenty of saliva**

**Your dealer:**





## The feeding method has an influence on digestion

A calf will naturally suckle with its nose upwards. There's a reason for this. This natural drinking position and the powerful sucking trigger the proper swallowing reflex. This ensures that the milk flows directly to the abomasum, bypassing the rumen. The saliva produced while feeding keeps the abomasum pH stable, preventing the occurrence of calf scours. No milk in the rumen means: **no ruminal drinkers.**

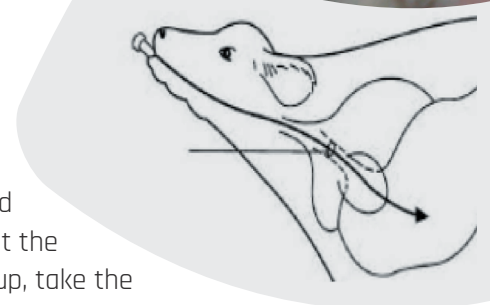
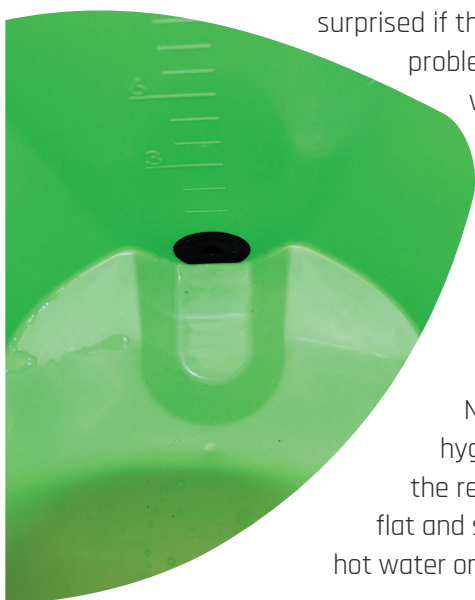
### Why feed my calves with the ECF calf milk feeder system?

The ECF teat has an open connection to the milk in the bucket. This means the calf must suck vigorously with the tongue around the teat – as its instincts tell it. Other types of feeders with a backflow valve or flap on the inflow side can cause pressure build-up in the teat – the calf then suckles less forcefully, produces less saliva, and runs the risk of choking. Those first 14 days of calf rearing are precisely the most problematic. The ECF system prevents feeding problems, and it is hygienic in use. The most satisfying moment in calf rearing is the sight of eagerly drinking calves. Enjoy it! The best start for a productive dairy cow is a healthy calf, reared with a minimum of medication.



### How do I use it?

Start with newly-born calves. **In the first 24 hours, give them 6 to 7 litres of high quality colostrum** with an easy teat. From day 2, put them on the ECF 1 drinker. Don't be surprised if they do not drink up all the milk the first time – it's not a problem. They can skip a feeding. Remove the leftover milk, and wait until the next feeding. Use the individual period to get the calves used to the teat. When the calves join the group, take the teat from the ECF 1 to the ECF 6. All calves are now accustomed to the teat, so there's no need for an adjustment period. Simply seal the unused holes with a plug. **Make sure that the teat hangs 60-70 cm above the ground.** Then you know you have the perfect drinking position. **Use one teat per calf.**



### How do I clean the ECF calf milk feeder system?

Nobody enjoys cleaning. That's why the ECF calf milk feeder system is designed for easy hygiene. The teat is open at the rear, does not need to be removed, and is rinsed along with the rest. The teat is seated firmly in the side of the bucket, such that the entire inside wall is flat and smooth. On the steeply sloping bottom, there is almost no leftover milk. Simply rinse with hot water once daily, and flush with the alkaline agent of the milking machine once a week.