



# TR-2 FEEDER

OPERATING & INSTALLATION INSTRUCTIONS





## TABLE OF CONTENTS

Presentation .....	3
FEATURES .....	5
Feed adjustment system .....	6
V-shaped feed spaces .....	7
TECHNICAL DATA.....	8
SPARE PARTS .....	10
INSTALLATION .....	12
Installation instructions.....	13
Installation diagram .....	14
OPERATING RECOMMENDATIONS .....	15
Positioning .....	16
Use in feed adjustment.....	16
Cleaning and maintenance .....	17
Quality certification and warranty .....	18
Retail outlets and maintenance service .....	19

### ***This guide is for informational purposes.***

*The content of this guide is designed to provide information on the features of products marketed by ROTECNA as well as on the way to install them.*

*This information will always be subject to the installation laws in force in the country concerned, so the installer responsible for assembling ROTECNA products must install the product in accordance with the relevant regulations.*



Read the instructions



---

## PRESENTATION



### TR-2 dry feeder for finishing pigs

The TR-2 is a new concept of dry feeder for finishing pigs. With an easy feed adjustment system and a V-shaped double feed-space design which makes it easy to use with two large animals at the same time, the TR-2 offers farmers the best option for this production phase.

To ensure the suitable use of the feeder and maximise its performance, you can check all the information concerning the assembly, installation and operating recommendations for the TR-2 and downpipe set provided in this guide. The guide also features technical data on the product and information regarding its packaging and transportation.

The TR-2 is made entirely from plastic (high density polypropylene) and stainless steel, materials with a high resistance to impact from animals, corrosive agents and oxidants, ensuring a longer service life under optimal conditions.

The absence of porosity as well as the corners and feet on the base of the feeder make it easier for the farmer to clean, guarantee better disinfection and make it possible to maintain a high level of hygiene.



---

## FEATURES

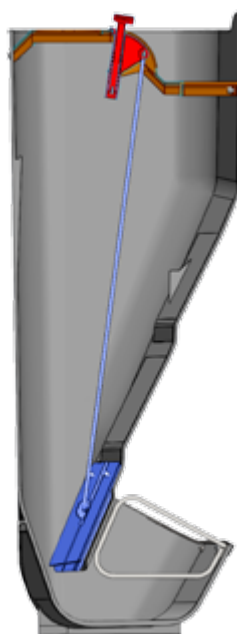
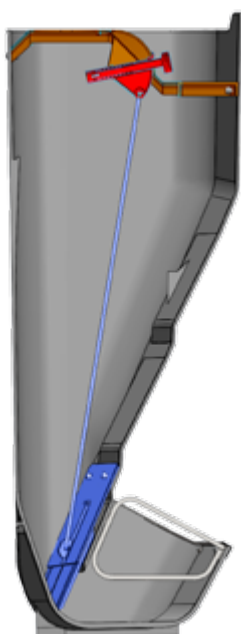
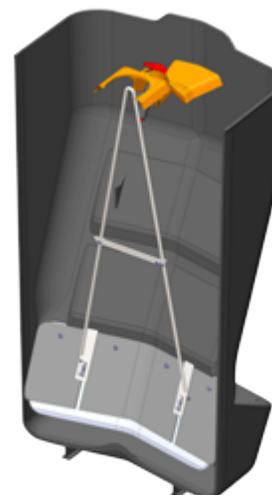


## FEED ADJUSTMENT SYSTEM: "SANDWICH"-STYLE SLIDE GATE



The exclusive slide-gate design allows a perfect adjustment of the feeder when full.

The "sandwich" system ensures that the closure does not have to bear resistance from the feed as it is not in direct contact with it and is protected by two sheets which it slides smoothly between.



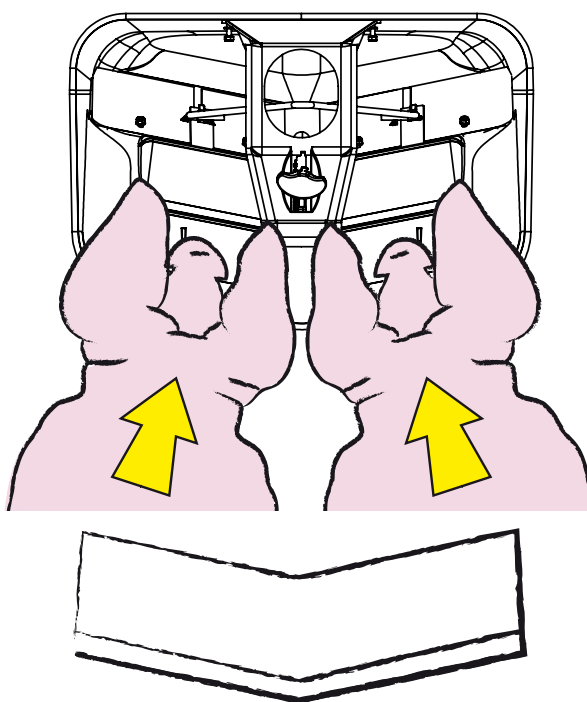


## V-SHAPED FEED SPACES



The V-shaped feed-space design makes it easier for pigs to use and allows you to feed 2 large animals at the same time without any problem.

The plate inclination and height means the animal can put its head inside and access the feed in a natural fashion.



V-SHAPE







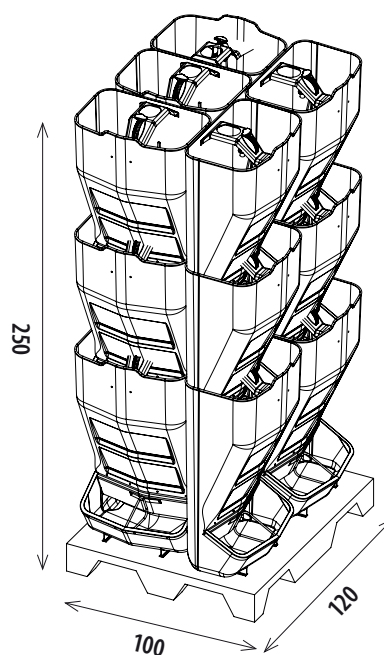
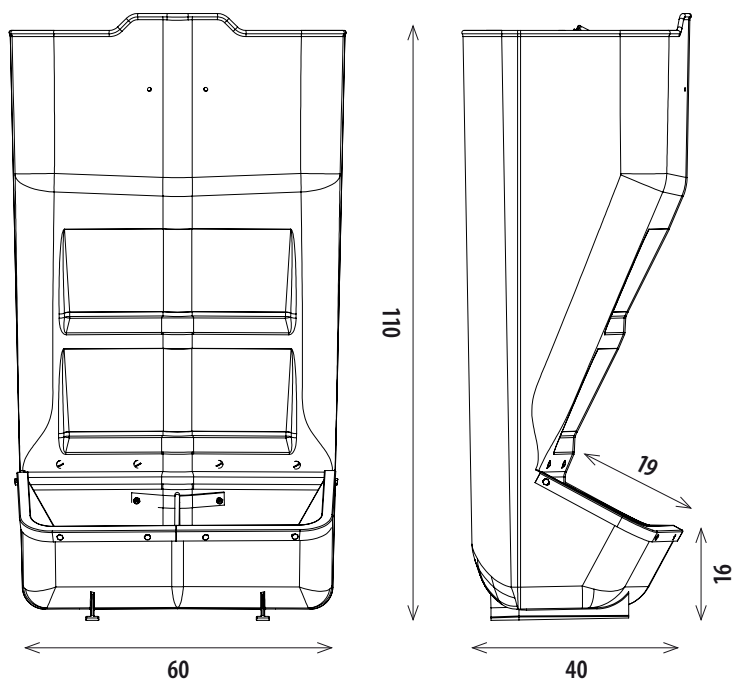
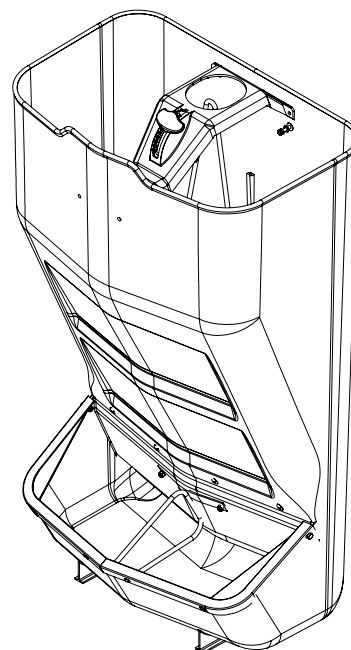
---






## TECHNICAL DATA





TECHNICAL DATA	
Capacity:	130 L.
Animal weight:	18 – 120 kg.
Suitable for:	Finishing (feed)
Feed:	Dry
No. animals/pen:	20 – 22
Height:	110 cm
Width:	60 cm
Depth:	40 cm
Plate access:	16 cm
No. feed spaces	2
Feed-space width:	28 + 28 cm
Weight:	12,5 kg.



PACKAGING				
	$A \times L \times Al$ 			
15	100x120x250 cm	220	2,22	390

The TR-2 is supplied in pallets and stacked to optimise carriage space.

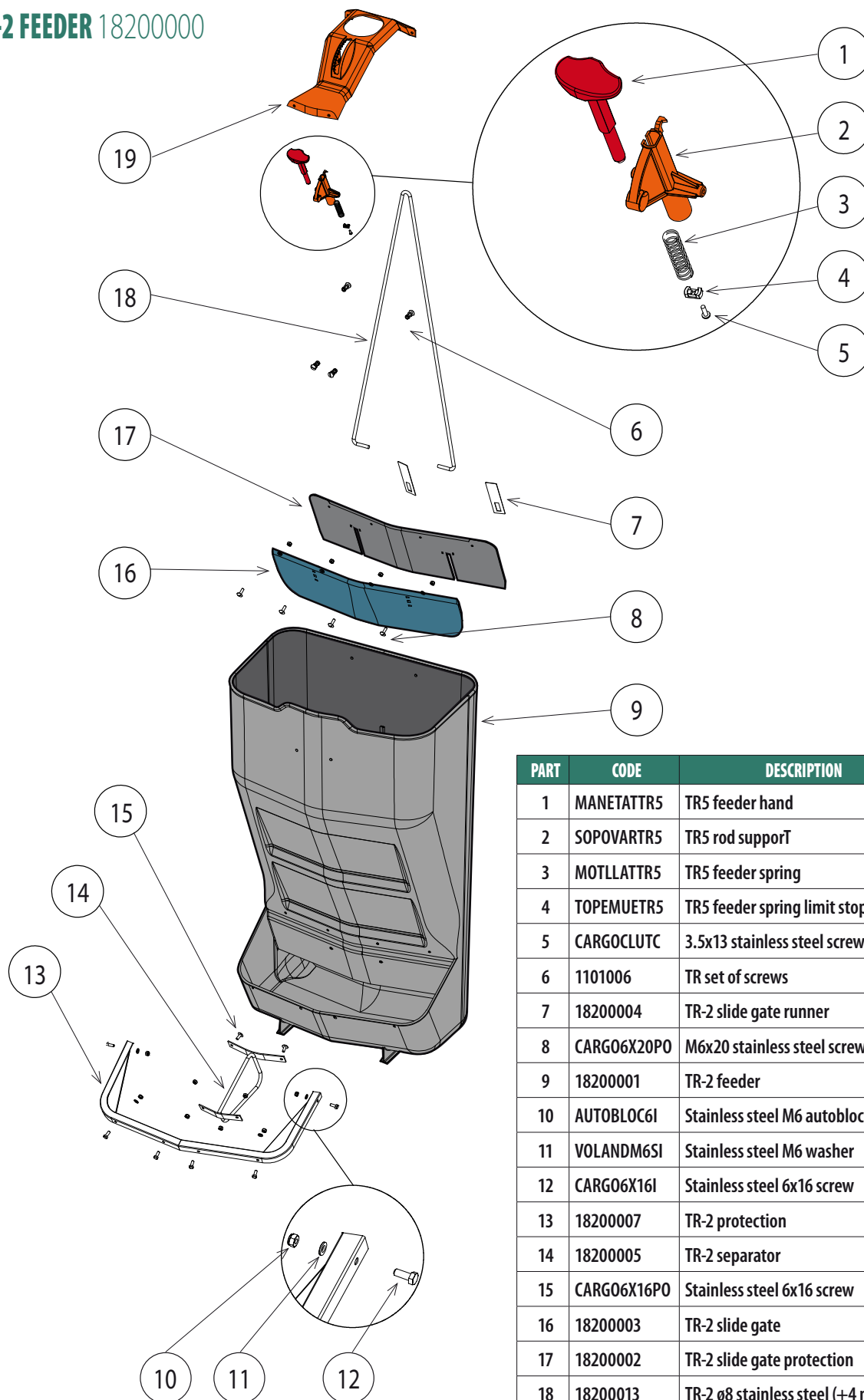


---

## SPARE PARTS



## TR-2 FEEDER 18200000



PART	CODE	DESCRIPTION	UNITS
1	MANETATTR5	TR5 feeder hand	1
2	SOPOVARTR5	TR5 rod support	1
3	MOTLLATTR5	TR5 feeder spring	1
4	TOPEMUETR5	TR5 feeder spring limit stop	1
5	CARGOCLUTC	3.5x13 stainless steel screw	1
6	1101006	TR set of screws	1
7	18200004	TR-2 slide gate runner	2
8	CARGO6X20PO	M6x20 stainless steel screw	4
9	18200001	TR-2 feeder	1
10	AUTOBLOC6I	Stainless steel M6 autoblock	12
11	VOLANDM6SI	Stainless steel M6 washer	8
12	CARGO6X16I	Stainless steel 6x16 screw	6
13	18200007	TR-2 protection	1
14	18200005	TR-2 separator	1
15	CARGO6X16PO	Stainless steel 6x16 screw	2
16	18200003	TR-2 slide gate	1
17	18200002	TR-2 slide gate protection	1
18	18200013	TR-2 ø8 stainless steel (+4 mm) rod	1
19	18200006	TR-2 bridge	1



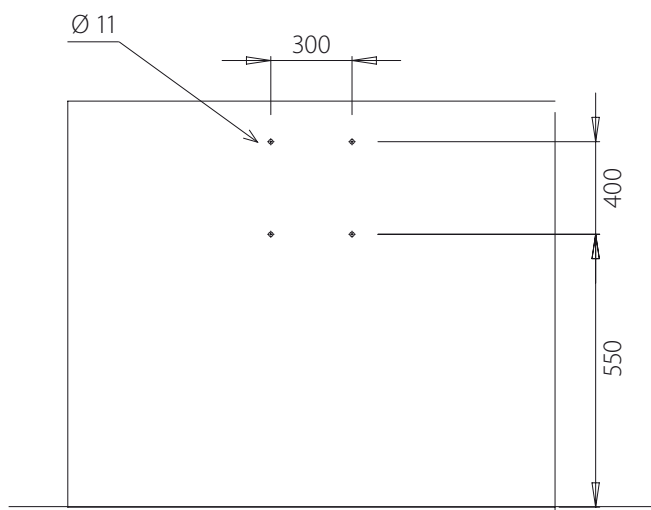
---

## INSTALLATION

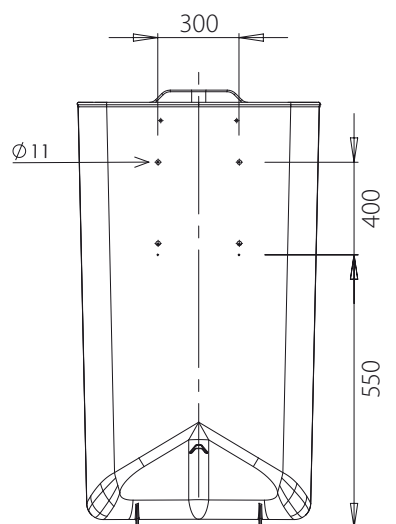


## INSTALLATION INSTRUCTIONS: TR-2

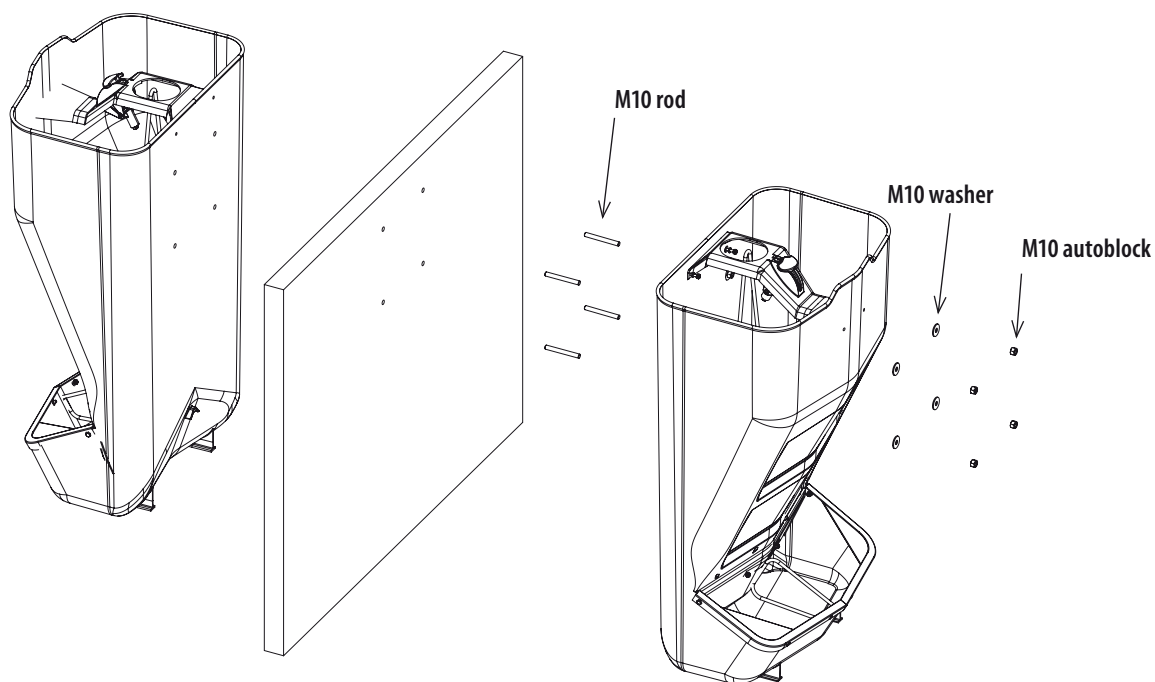
1. Make 4 holes in the fence.



2. Make 4 holes in the TR-2 feeder.



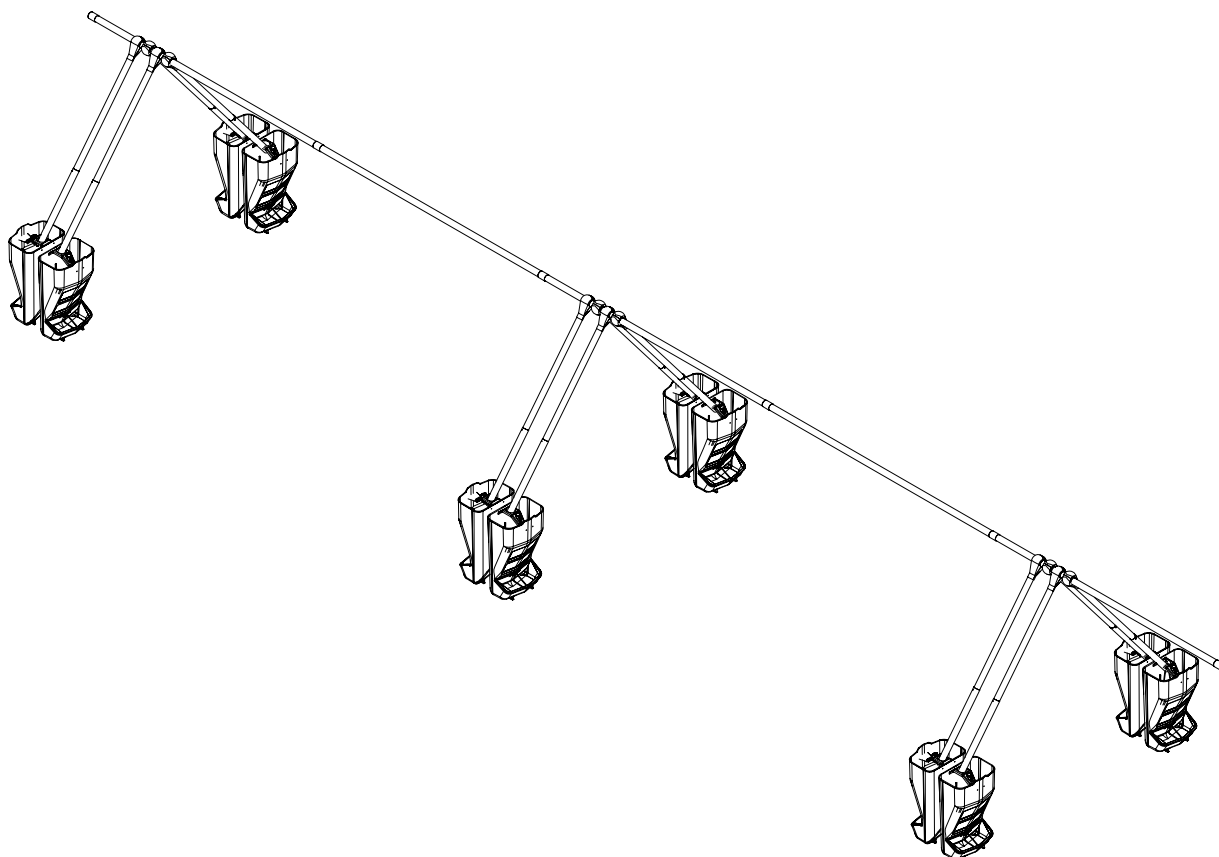
3. Position the TR-2 feeders next to the fence. Line up the holes.  
Thread the 4 rods through the holes.  
Position the 8 washers (4 per feeder).  
Fasten with the 8 autoblocks (4 per feeder).



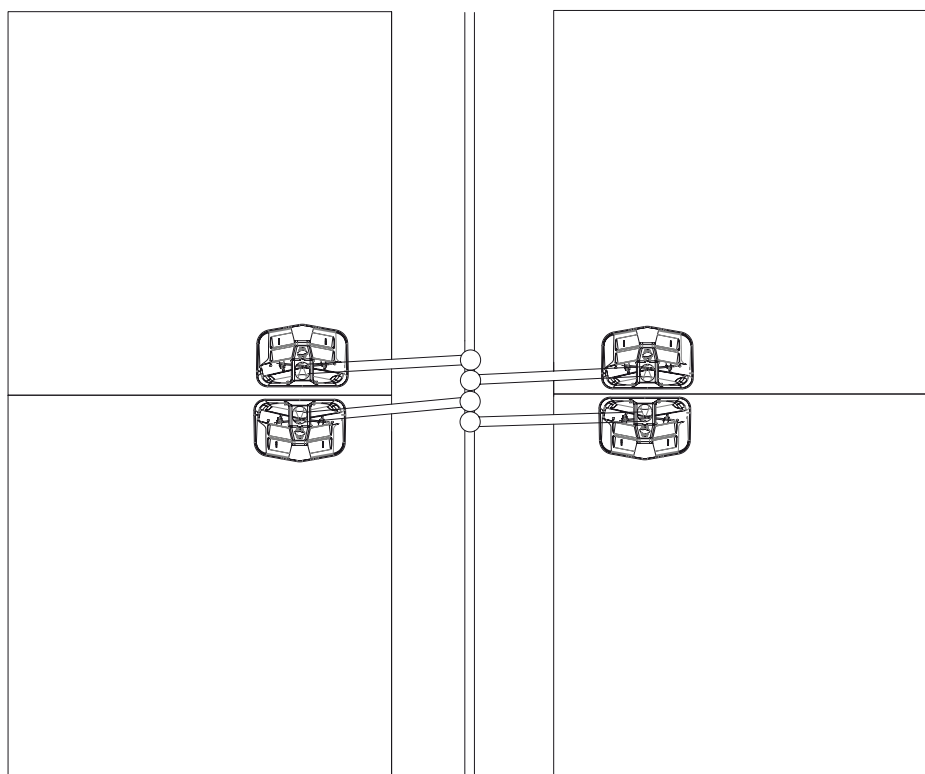


## INSTALLATION DIAGRAM

1.



2.





---

## OPERATING RECOMMENDATIONS





### The positioning in the pen must:

- Allow the feeder to be adjusted from the aisle.
- Leave a certain distance between the separator and the feeder to facilitate access to two animals at the same time and allow their arrangement in a V shape.

## ADJUSTMENT

The feeder has 12 positions, which make it possible to adjust the slide gate opening to supply the desired amount of feed to the pigs. In position 0 the slide gate is completely closed, meaning that no feed is supplied; while in position 11 it is open as far as it will go.

The feeder must be adjusted so that enough feed is supplied for the animals to eat ad lib, without limiting the amount they eat but also avoiding wastage.



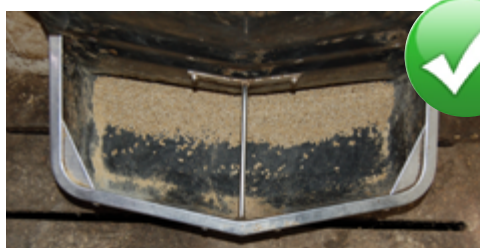
### 1. INCORRECT – EXCESS FLOW

The feeder is very full of feed, meaning that some of it is wasted. In this case, you should reduce the adjustment position to the optimal point.



### 2. INCORRECT – INSUFFICIENT FLOW

The feeder is practically empty, meaning the pigs cannot eat ad lib. In this case, you should raise the adjustment position to the optimal point.



### 3. CORRECT

The amount of feed in the feeder is such that the pig can eat with ease and no feed is wasted. There is no sign of feed on the ground.



## Cleaning and maintenance

**The following should be considered during cleaning works to ensure good feeder maintenance:**

- The feeder should be cleaned with water and soapy detergent.
- Do not use sharp or abrasive metal objects which could damage the feeder surface.

**If cleaning with pressure equipment:**

- Do not spray at a high pressure.
- The pressure lance must have a diffuser so that the water jet is not concentrated on any specific point.
- Do not use the lance nozzle from a distance of less than 20 cm from the surface.
- Use water free of abrasive particles.



## QUALITY CERTIFICATE

The TR-2 feeder has the following certifications and these guarantee that Rotecna products are made from quality materials and following strict control processes.

Our products are designed with a focus on improving pork livestock production, as well as animal welfare.



Complies with the EC's Directive.



Manufactured under the ISO9001 Quality System.



ROTECNA product.



GOST TR certificate.

## WARRANTY

- Rotecna products have a two-year warranty starting from the invoice date.
- In case of imperfection please contact the manufacturer.
- Warranty excludes imperfections caused to the material during transportation or due to poor assembly, as well as poor use of the feeder due to failure to follow the instructions and recommendations included in this guide.
- The manufacturer offers an aftersales service when the two-year warranty has expired.



## RETAIL OUTLETS AND MAINTENANCE SERVICE

### What does ROTECHNA offer?

ROTECHNA offers you the material needed to install the TR-2 feeder and downpipe system.

ROTECHNA can advise you on your new installation and/or provide future advice to ensure its good operation.

## Information for our customers...

ROTECHNA makes and markets the products needed to install the TR-2 feeder and downpipe system.

For correct installation and perfect operation it is very important to follow our recommendations and use the accessories described in this guide in order to avoid problems, improve the output of your installation and extend its service life.

In accordance with ROTECHNA's policy, our sales department will advise you when asked, leaving it up to you and the installer responsible for the design/assembly of the installation to decide how best to use the products.

Thank you for putting your trust in us. Please do not hesitate to contact us if you have any questions.

Rotecna, s.a. | April 2015



**ROTECNA, S.A.**

Camí vell de Tàrrega, s/n  
Polígon Industrial, nave nº3  
25310 Agramunt (Lleida) SPAIN  
Tel. +34 973 39 12 67 · Fax: +34 973 39 12 32  
e-mail: [rotecna@rotecna.com](mailto:rotecna@rotecna.com)

**[www.rotecna.com](http://www.rotecna.com)**

ROTECNAPRESS



[issuu.com/rotecnapress](http://issuu.com/rotecnapress)