

i-LP300-A  
i-LPB300-A  
i-LP500-A  
i-LPB500-A



CE certified

**Must Read!**

\*Max. 250W

## Assembly Instructions and Cautions of Intelligent Lamp Protector!

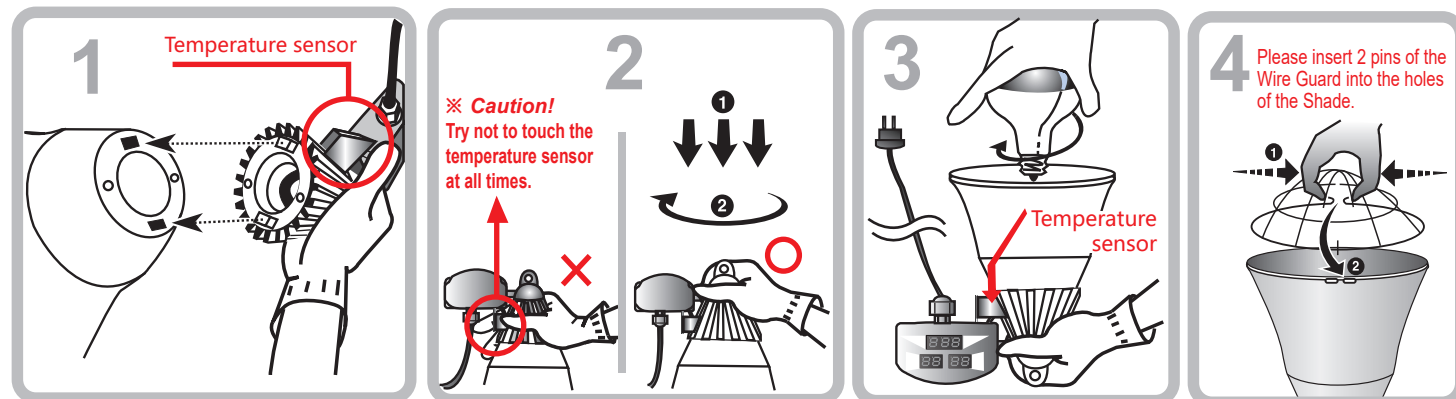
(for Suspension Type : i-LP300-A, i-LPB300-A, i-LP500-A, i-LPB500-A)

www.interheat.com

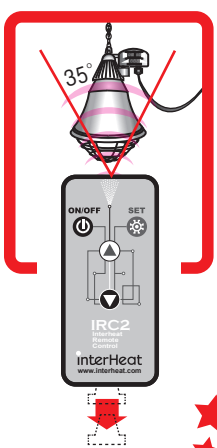
**interHeat**

interheat@interheat.com

### Assembly & Installation



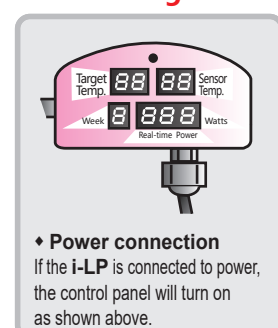
### Switching-On & Setting Target Temp.



※ Please keep the enclosed Remote Control since the i-LP(Intelligent Lamp Protector) can be controlled only by the Remote.

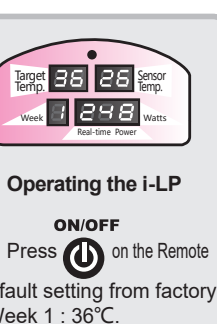
※ When operating the remote control to set the intelligent Lamp Protector(i-LP), cover the side of the remote control signal hole with your hand to prevent neighboring i-LPs from being affected by the remote control signal.

#### ▶ Switching-On



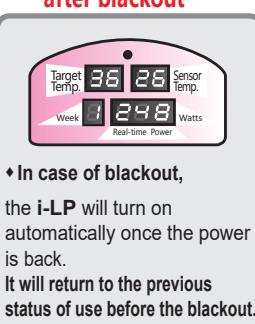
◆ **Power connection**  
If the i-LP is connected to power, the control panel will turn on as shown above.

#### ◆ Operating the i-LP



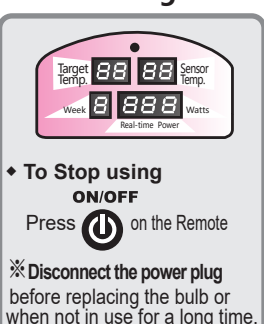
◆ **ON/OFF**  
Press on the Remote  
Default setting from factory - Week 1 : 36°C.

#### ▶ Power re-connection after blackout



◆ **In case of blackout,**  
the i-LP will turn on automatically once the power is back.  
It will return to the previous status of use before the blackout.

#### ▶ Switching-Off

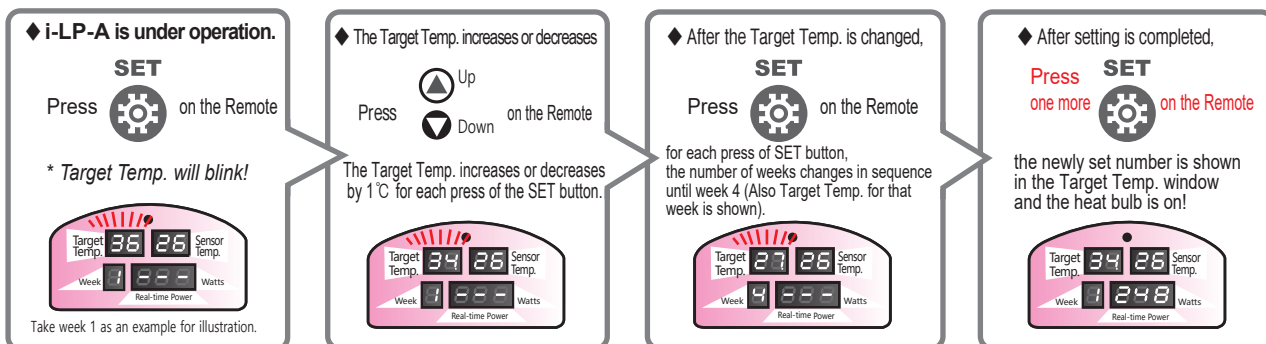


◆ **To Stop using ON/OFF**  
Press on the Remote  
※ **Disconnect the power plug** before replacing the bulb or when not in use for a long time.

< 230-240V 250W bulb used >

**Initial setting of Target Temp. (°C)** ▶ Week 1 36°C Week 2 33°C Week 3 30°C Week 4 27°C

▶ **Setting Target Temp. :** While the heat bulb is on, if you press the SET button, the bulb will be turned off temporarily.



★ **Remarks** \* Target Temp.: similar to the Temp. between a radius of 10 & 20cm from center at a distance of 50cm under the lamp (similar to temperature on piglets' back).  
\* Sensor Temp.: a parameter concept for power saving, irrelevant of the ground temperature. In most cases the displayed Sensor Temp. is higher than Target Temp.

## Assembly Instructions and Cautions of Intelligent Lamp Protector!

(for Suspension Type : i-LP300-A, i-LPB300-A, i-LP500-A, i-LPB500-A)

www.interheat.com

**interHeat**

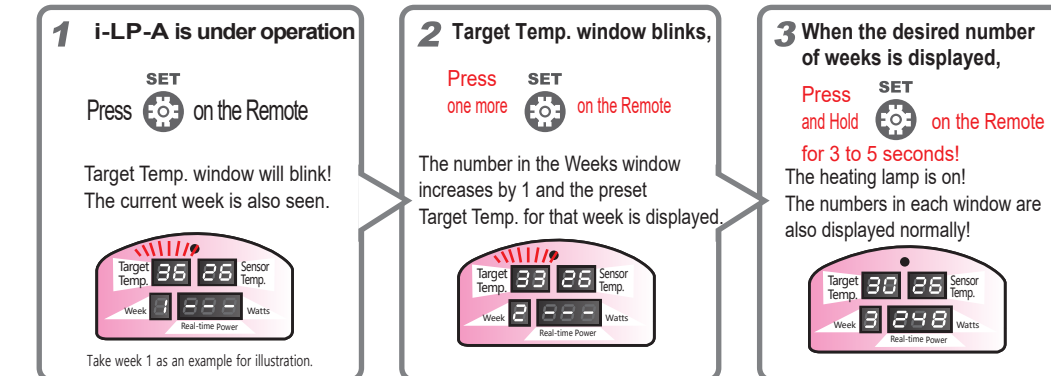
interheat@interheat.com

### Change and reset of initial Week settings

\* Pre set-up is start of automatic running from week 1.

But if the user needs to start running from week 2 to week 4 due to farm conditions, do the following with the Remote Controller.

▶ **Week setting change** (press the SET button while the heating lamp is on, the bulb is turned off)



Even if the program is reset, the Target Temp. will not be reset.  
Target Temp. remains the same as the initial setting (or individual setting by the user).

▶ **Program reset is essential!**

★ **It is necessary for normal operation!**  
If you change the Week settings, you must reset the program by pressing and holding for 3 to 5 seconds in order to start running from week 1 the next time you use it in the farrowing room!



### Safety Function

Bulb will be automatically turned off for safety if Sensor Temp. exceeds 50°C(122°F) and will automatically re-work if Sensor Temp. goes down below 50°C(122°F) .

### Safety Precautions

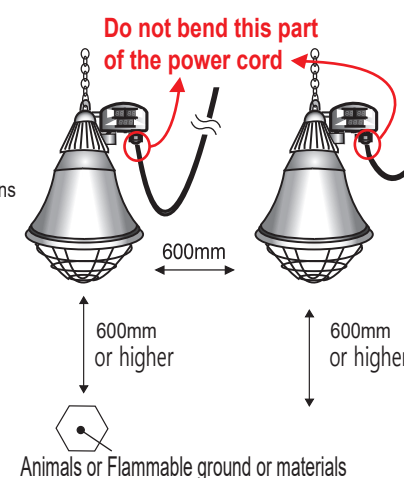
To prevent fire, electric shock and other dangers, please follow the safety regulations below:

- \* Please read the safety precautions carefully before using the appliance.
- \* This is a heat-radiating appliance for animal breeding.
- \* Please do not use this appliance for other intended use.
- \* The appliance should be securely fixed in position.
- \* The appliance is a fixed equipment and should be used on fixed circuit with an independent power switch.
- \* The Wire Guard should not be removed.
- \* The minimum distance between the lamp and the animals or inflammable materials is 0.6m.
- \* Do not touch the hot surface.
- \* To prevent electric shock, do not place cord, plug or appliance in water or other liquid.
- \* When not in use or before cleaning, unplug from outlet. For your safety, turn off the switch and wait until the unit cools down before uninstalling or cleaning.
- \* Any use of accessory attachments not recommended by InterHeat Inc. may result in fire, electric shock or personal injury.

- \* Do not use it outdoors.
  - \* Do not let cord hang on the edge of an object or touch hot surface.
  - \* Keep away from hot gas, induction cooker and heated oven.
  - \* Remove battery if the remote control is not used for long-term period.
  - \* The heating parts, temp. sensor and cooling fins should be kept clean from dust and dirt.
  - \* Disconnect the power plug before replacing the bulb or when not in use for a long time.
- Please keep this instruction manual.  
Special maintenance other than cleaning is needed. Installation should be carried out by electrician.  
Please send the appliance back to InterHeat Inc. for after-sale service.  
Please do not repair the appliance by yourself.

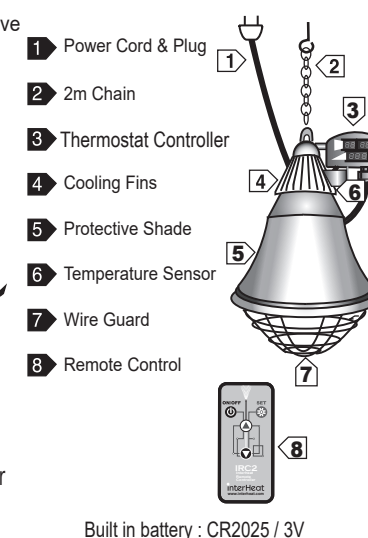
### Installation

Keep the power cord away from the protective shade after installation, power cord should not touch the protective shade.



Animals or Flammable ground or materials

### Components



Built in battery : CR2025 / 3V

### Technical Specifications

- \* Voltage: 230-240V
- \* Frequency: 50/60Hz
- \* Waterproof Class: IPX4
- \* Length of Power Cord: 2.5m or 4.5m
- \* Dim. of Protective Shade: 21cm(i-LP) or 30cm(i-LPB)
- \* Max. wattage: 250W
- \* Model: i-LP300-A, i-LPB300-A, i-LP500-A, i-LPB500-A

CE Standard: IEC/EN 60331-1, IEC/EN 60331-2-71, EN 55014-1, EN 55014-2, EN 61000-3-2, EN 61000-3-3

2023. 8. 1.  
President/CEO

interheat@interheat.com

INTERHEAT INC.  
9-7, Hwangsaen-ro 200 beon-gil,  
Bundang, Seongnam, Gyeonggi-do  
13595 KOREA  
TEL : +82 - 70 - 7500 - 1201  
FAX : +82 - 70 - 7500 - 1204  
interheat@interheat.com

INTERHEAT CHINA INC.  
98 Xinghua Road, Jintan District,  
Changzhou, Jiangsu, 213200 CHINA