



CorePro LEDtube EM/ Mains

CorePro LEDtube 1200mm 16W840 C G

The CorePro LEDtube is an affordable LED solution suitable for replacing T8 fluorescent lamps. The product provides a natural lighting effect for use in general lighting applications, as well as instant energy savings – an environmentally friendly solution.

Product data

• General Information

Cap-Base	G13 [G13 Medium Bi-Pin Fluorescent]
Main Application	Industrial
Nominal Lifetime (Nom)	30000 h
Switching Cycle B50L70	200000X 30000

• Light Technical

Color Code	840 [CCT of 4000K (841)]
Beam Angle (Nom)	240 °
Luminous Flux (Rated) (Nom)	1600 lm
Rated Beam Angle	240 °
Correlated Color Temperature (Nom)	4000 K
Color Consistency	6 steps
Color Rendering Index (Nom)	80
LLMF At End Of Nominal Lifetime (Nom)	70 %

• Operating and Electrical

Input Frequency	50-60_1 Hz
Power (Rated) (Nom)	16 W
Starting Time (Max)	0.5 s
Warm Up Time To 60% Light (Nom)	instant full light
Power Factor (Min)	0.9
Voltage (Nom)	220-240 V

• Temperature

T-Ambient (Max)	45 °C
T-Ambient (Min)	-20 °C
T-Storage (Max)	65 °C
T-Storage (Min)	-40 °C
T-Case Maximum (Max)	56 °C
T-Case Maximum (Nom)	56 °C

• Controls and Dimming

Dimmable	No
----------	----

• Mechanical and Housing

Product Length	1200 mm
----------------	---------

• Approval and Application

Energy Saving Product	Yes
Suitable For Accent Lighting	No
Energy Efficiency Label (EEL)	A+
Approval Marks	CE marking RoHS compliance KEMA Keur certificate
Energy Consumption kWh/1000 h	16 kWh

• Product Data

Full product code	871869649281900
Order product name	CorePro LEDtube 1200mm 16W840 C G

PHILIPS

CorePro LEDtube EM/Mains

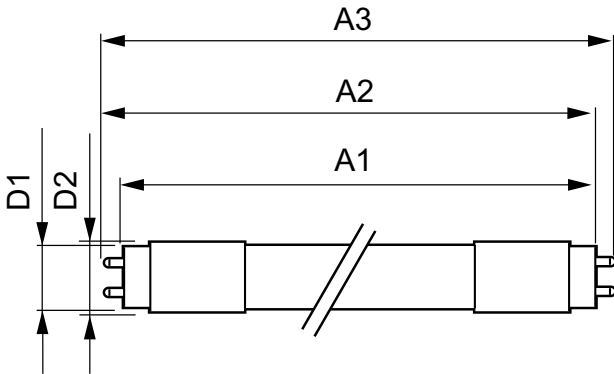
EAN/UPC - Product 8718696492819
Order code 929001173002
Numerator - Quantity Per Pack 1

Numerator - Packs per outer box 10
Material Nr. (12NC) 929001173002
Net Weight (Piece) 0.215 kg

Warnings and Safety

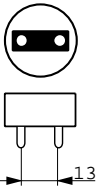
• -

Dimensional drawing

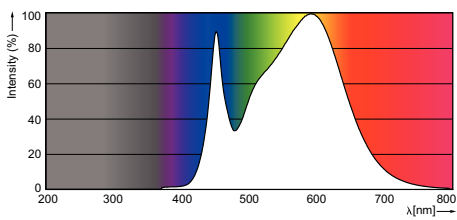


LEDtube 1200mm 16W/840 C G

Product	D1	D2	A1	A2	A3
CorePro LEDtube 1200mm 16W840 C G	25.68 mm	28 mm	1198.0 mm	1205.0 mm	1212.0 mm



Photometric data



© 2016 Philips Lighting Holding B.V.
All rights reserved.

Specifications are subject to change without notice. Trademarks are the property of Koninklijke Philips N.V. (Royal Philips) or their respective owners.

www.philips.com/lighting

2016, January 15
data subject to change