

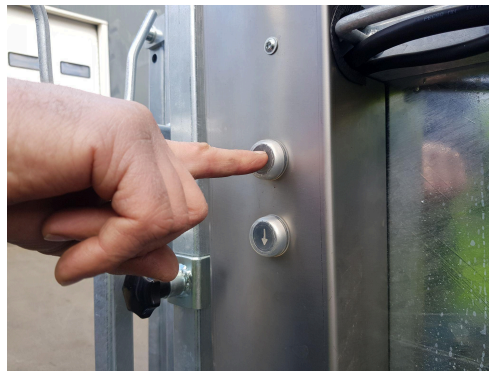
Assembly instructions for wheel set Titanium pro

The numbering below refers to the attached photo numbers.

1. Complete wheel set parts
2. Connect the box to the power supply and let the box rise by 20cm
3. idem
4. Mount the rear wheels by inserting the axle into the mounting tube on the side of the foot plate on the tailgate side
5. Mount the handle on the nose wheel
6. Fix the handle with the locking pin
7. Take the jockey wheel and align the connecting tubes in the center of the floor plate on the door side of the box
8. idem
9. Install the coupling pin through and through and install the locking pin with clip
10. Now lower the box completely and disconnect the box from the power supply
11. Your box is ready to ride



1



2



3



4



5



6



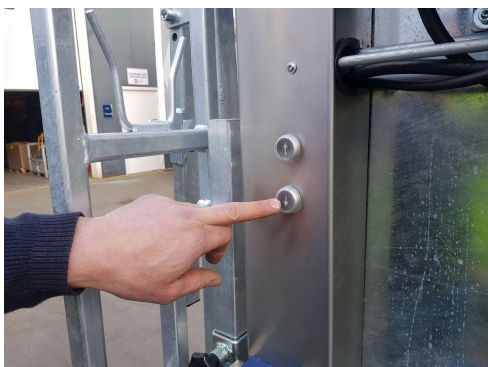
7



8



9



10



11