

Relay replacement manual, platinum box.

1. Test which function of the box is defective.
2. When the faulty function is known. Now remove the voltage from the box.
3. Unscrew the top lid of the Platinum box (see image 1).
4. Remove the top cover and go to the control box (see image 2).
5. Now unscrew the 4 gray bolts by turning them a quarter turn to the left.
6. Now remove the protective cover from the switch box.
7. Find the correct relay number (see image 3) for the faulty function.
 - Relay number 1 for faulty function: left front leg up.
 - Relay number 2 for faulty function: left front leg down.
 - Relay number 3 for faulty function: front leg up right.
 - Relay number 4 for faulty function: front leg down right.
 - Relay number 5 for faulty function: rear leg up.
 - Relay number 6 for faulty function: rear leg down.
 - Relay number 7 for faulty function: belly band up.
 - Relay number 8 for faulty function: belly band down.
 - Relay number 9 for faulty function: emergency stop.
 - Relay number 10 for faulty function: lighting.
8. Once the correct relay has been found, take a picture of the cables and unscrew the screws so that the cables can be removed.
9. Now remove the relay from the rail (see image 4) by pulling the white piece backwards with a screwdriver (see image 5).
10. Take a new relay of the same type, write here the same number that is on the defective relay.
11. Now place the new relay in the same position as the old relay was.
12. Now screw the cables into the relay in the same way as they were in the defective relay.
13. Now place the protective box back on the switch box and tighten the gray bolts clockwise.
14. Plug back in and test the functionality of faulty function.
15. When everything is functional again, place the top lid on the box, and this manual has come to an end.

For the images referred to, see next page.



Image 1: top cover Platinum box.



Image 2: switchbox under top cover.

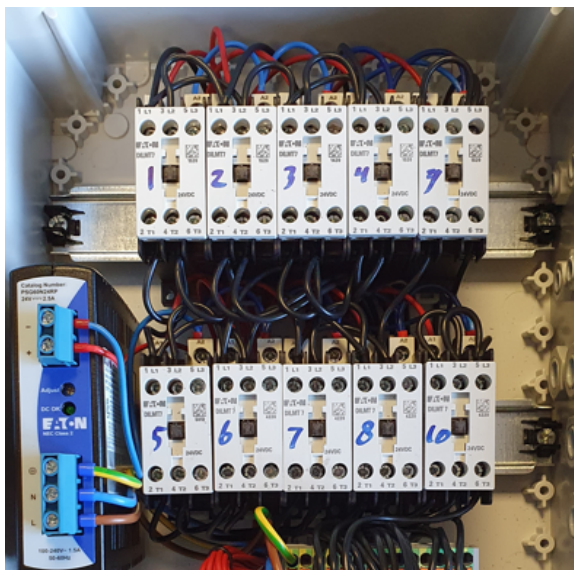


Image 3: numbering relay.

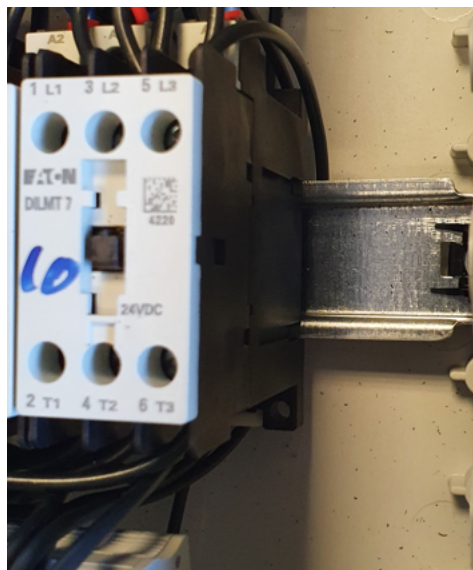


Image 4: relais in rail.



Image 5: Example pulling back the white piece.